



Sony Ericsson

# Working Instructions

## - mechanical -



*Satio*  
*U1i,U1a,U\_1*

# CONTENTS

|          |   |           |
|----------|---|-----------|
| <b>1</b> | <b>Exterior Views.....</b>                      | <b>4</b>  |
| 1.1      | Satio.....                                      | 4         |
| <b>2</b> | <b>Tools .....</b>                              | <b>5</b>  |
| <b>3</b> | <b>Disassembly.....</b>                         | <b>6</b>  |
| 3.1      | Battery Cover.....                              | 7         |
| 3.2      | Battery .....                                   | 7         |
| 3.3      | Rear Panel Sub Assy .....                       | 8         |
| 3.4      | Main Antenna.....                               | 10        |
| 3.5      | Front Cover Sub Assembly .....                  | 10        |
| 3.6      | Rear Cover Sub Assembly .....                   | 12        |
| 3.7      | Antenna(Wlan/GPS/Bluetooth).....                | 13        |
| 3.8      | Xenon Flash Module .....                        | 14        |
| 3.9      | PCB & Frame PWB Sub Assembly with Display ..... | 15        |
| 3.10     | Camera 12.1M MPixel.....                        | 17        |
| <b>4</b> | <b>Replacement .....</b>                        | <b>18</b> |
| 4.1      | Battery Cover.....                              | 18        |
| 4.2      | Rear Panel Sub Assy .....                       | 18        |
| 4.3      | Main Antenna.....                               | 18        |
| 4.4      | Front Cover Sub Assy.....                       | 18        |
| 4.5      | Rear Cover Sub Assy.....                        | 19        |
| 4.6      | Antenna(Wlan/GPS/Bluetooth).....                | 19        |
| 4.7      | Xenon Flash Module .....                        | 19        |
| 4.8      | Camera 12.1M MPixel.....                        | 19        |
| 4.9      | Camera Key.....                                 | 20        |
| 4.10     | Camera QCIF Mpixel .....                        | 22        |
| 4.11     | Carrier Holder Receiver .....                   | 24        |
| 4.12     | Center Key .....                                | 26        |
| 4.13     | Core Unit Label.....                            | 27        |
| 4.14     | Cushion Microphone.....                         | 28        |
| 4.15     | Cushion Tiger Module.....                       | 29        |
| 4.16     | Display 3.47 TFT .....                          | 30        |
| 4.17     | Send Key .....                                  | 33        |
| 4.18     | Foil Adhesive Panel Front .....                 | 34        |
| 4.19     | Foil Adhesive Panel Front (Center) .....        | 35        |
| 4.20     | Foil Adhesive FPC LCD .....                     | 36        |
| 4.21     | Foil Adhesive Panel Rear .....                  | 37        |
| 4.22     | FPC Receiver .....                              | 40        |
| 4.23     | FPC Side Key.....                               | 43        |



|      |  |    |
|------|--|----|
| 4.24 | Frame PWB Sub Assembly .....               | 44 |
| 4.25 | Gasket (CAM).....                          | 45 |
| 4.26 | Gasket (BB).....                           | 46 |
| 4.27 | Gasket LCD .....                           | 47 |
| 4.28 | Input Switch Jog Dial .....                | 49 |
| 4.29 | Liquid Intrusion Indicator .....           | 51 |
| 4.30 | MComp Sheet VIB .....                      | 52 |
| 4.31 | Micro Cap SD .....                         | 53 |
| 4.32 | Mode Key .....                             | 55 |
| 4.33 | Navi Key .....                             | 56 |
| 4.34 | On/Off Key.....                            | 57 |
| 4.35 | Panel Cover.....                           | 58 |
| 4.36 | End Key .....                              | 60 |
| 4.37 | Shield Can Lid A.....                      | 61 |
| 4.38 | Shield Can Lid B.....                      | 62 |
| 4.39 | Shield Can Lid C.....                      | 63 |
| 4.40 | Window Main Display.....                   | 64 |
| 4.41 | Volume Key.....                            | 67 |
| 5    | Reassembly.....                            | 68 |
| 5.1  | Camera 12.1M MPixel.....                   | 68 |
| 5.2  | PCB & Frame PWB Sub Assy with Display..... | 69 |
| 5.3  | Xenon Flash Module .....                   | 70 |
| 5.4  | Antenna(Wlan/GPS/Bluetooth).....           | 71 |
| 5.5  | Rear Cover Sub Assy.....                   | 72 |
| 5.6  | Front Cover Sub Assy.....                  | 73 |
| 5.7  | Main Antenna.....                          | 74 |
| 5.8  | Rear Panel Sub Assy .....                  | 75 |
| 5.9  | Battery .....                              | 76 |
| 5.10 | Battery Cover.....                         | 77 |
| 6    | Revision History .....                     | 78 |

**For general information about mechanical repair related issues, refer to  
1220-1333: Generic Repair Manual - mechanical**



# 1 Exterior Views

## 1.1 Satio





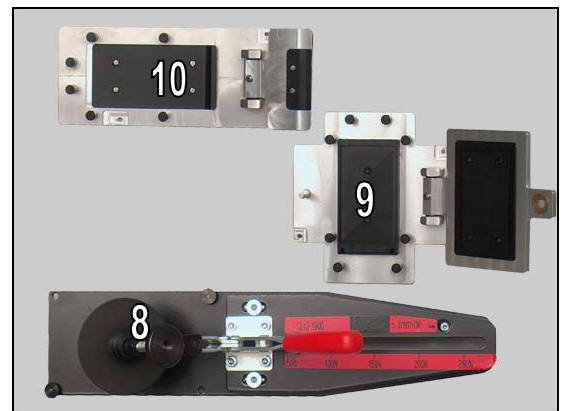
## 2 Tools

### SPECIAL TOOLS

1. Torque Screwdriver
2. Bits (T6)
3. Bits (JCIS No 0)
4. Front Opening Tool
5. Camera Removal Tool (for Camera QCIF)
6. Plectrum
7. Flex Film Assembly Tool



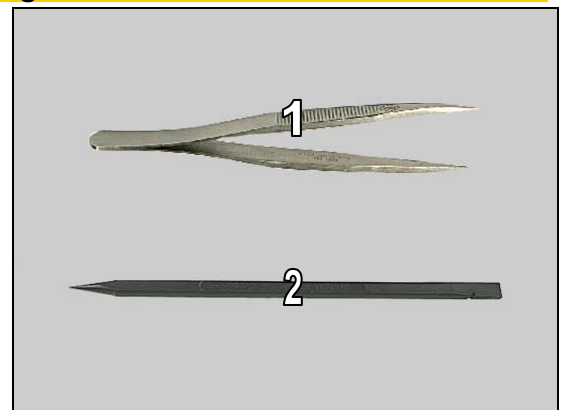
8. Pressure Tool
9. Window Pressure Tool Insert
10. Rear Panel Pressure Tool Insert



**For part no's on the tools above, refer to the 'Tools Catalogue/Matrix'!**

### STANDARD TOOLS

1. Tweezers
2. Nylon Pointer



### 3 Disassembly

**Discharge the flash in 'service menu' before the disassembly operation!**

The '**service**' menu can be accessed with the following key combination. Use the red and green buttons below the Display.

**Red Green Red Red Green Red**

Then in the Service Menu as follows:

Service tests

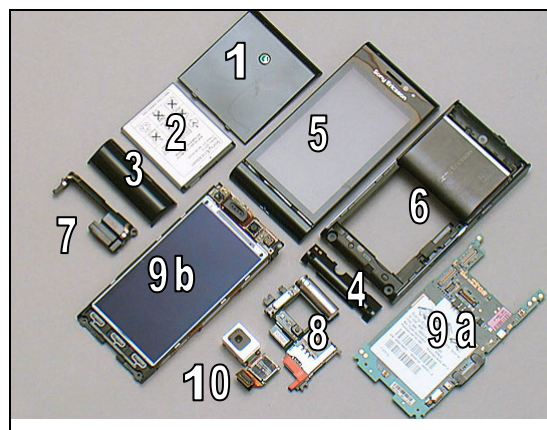
Camera

Xen.Flash

If it is not possible to access the Service Test Menu, leave the unit without battery for 30 minutes and the camera flash will be discharged.

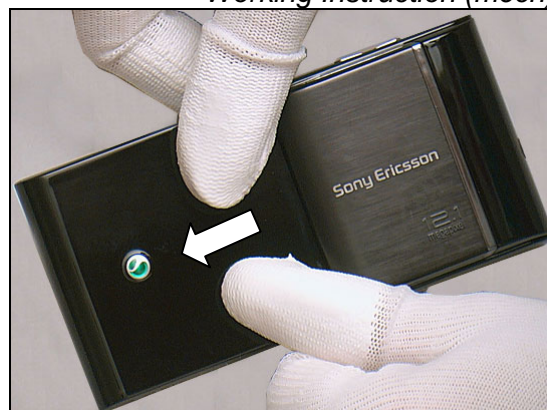
The disassembly is done in the following order:

1. Battery Cover
2. Battery
3. Rear Panel Sub Assy
4. Main Antenna
5. Front Cover Sub Assy
6. Rear Cover Sub Assy
7. Antenna(Wlan/GPS/Bluetooth)
8. Xenon Flash Module
9. PCB (a) & Frame PWB Sub Assembly with Display (b)
10. Camera 12.1M MPixel



## 3.1 Battery Cover

Push to release the Battery Cover.

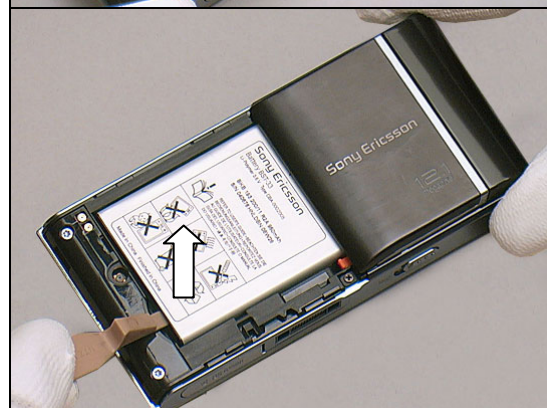


Remove it.

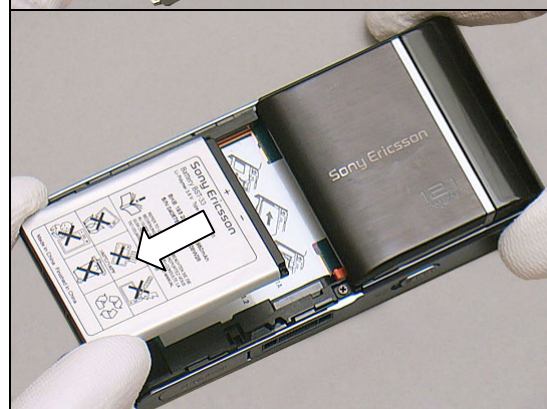


## 3.2 Battery

Lift up the Battery from its cavity with a front opening tool.



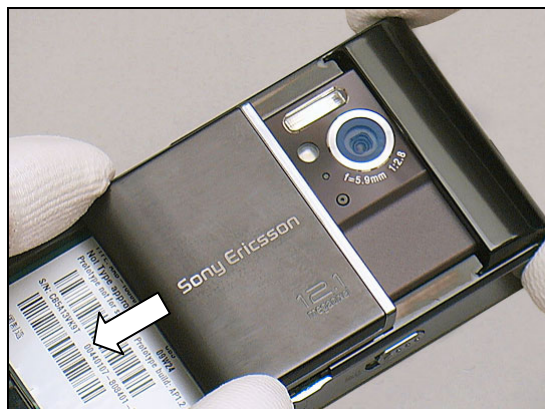
Remove it.



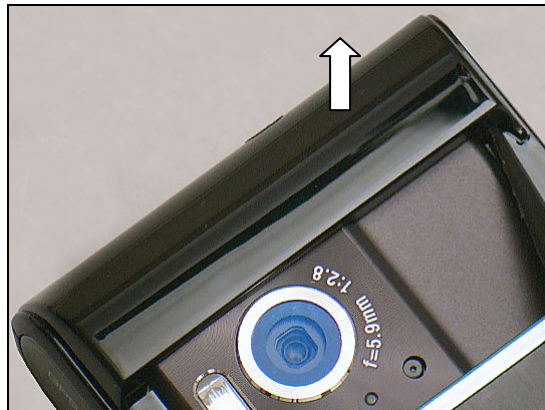
## Disassembly

### 3.3 Rear Panel Sub Assy

Slide the Camera cover open.



Detach one side of the Rear Panel Sub Assy with a nylon pointer.



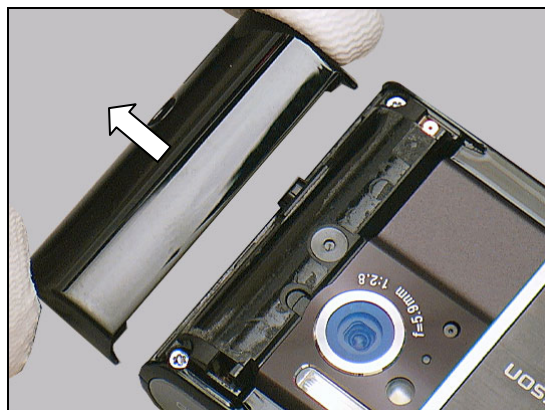
Detach the other side of the Rear Panel Sub Assy.





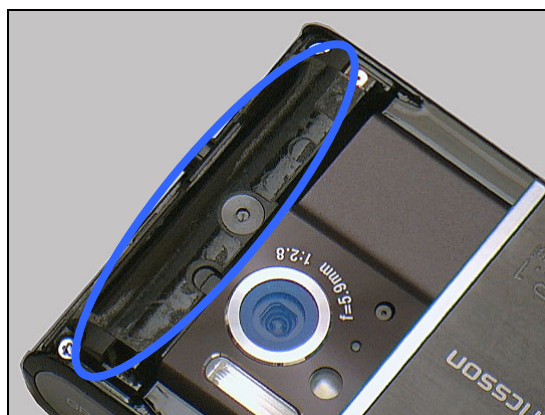
## Disassembly

Remove it.



Remove the Foil Adhesive Panel Rear.

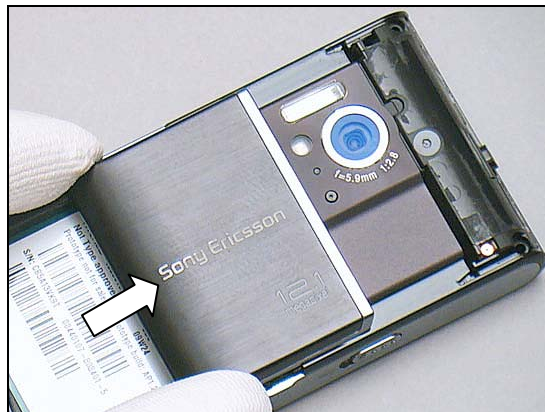
**Scrap! Not to be reused!**



Loosen the four screws with a screwdriver with T6.

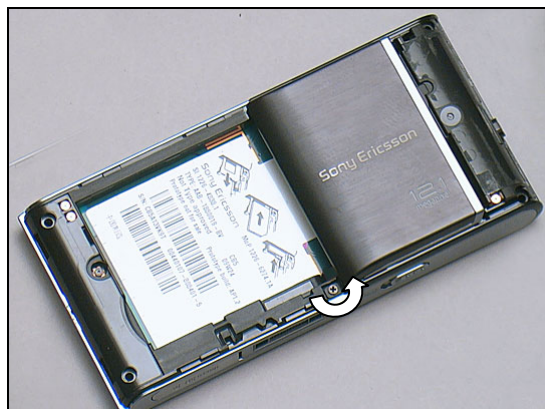


Close the camera cover.



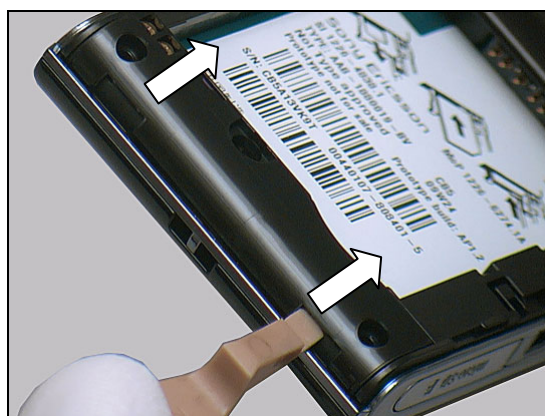
## Disassembly

Loosen the screw with a screwdriver with JCIS No0.



### 3.4 Main Antenna

Unsnap the two hooks of the Main Antenna with a front opening tool.

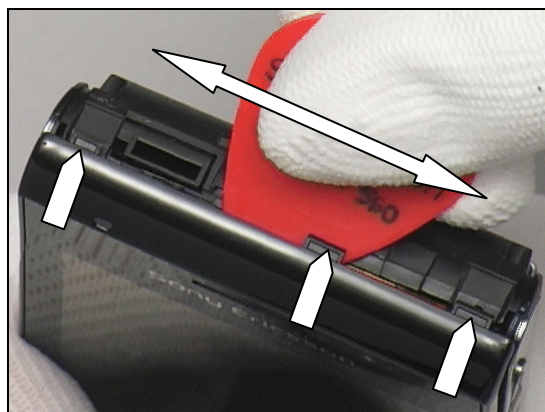


Detach and remove it.



### 3.5 Front Cover Sub Assembly

Unsnap the three hooks on the top side with a plectrum sliding back and forth.



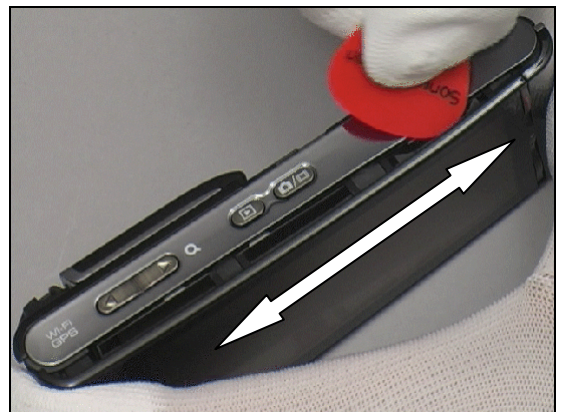


## Disassembly

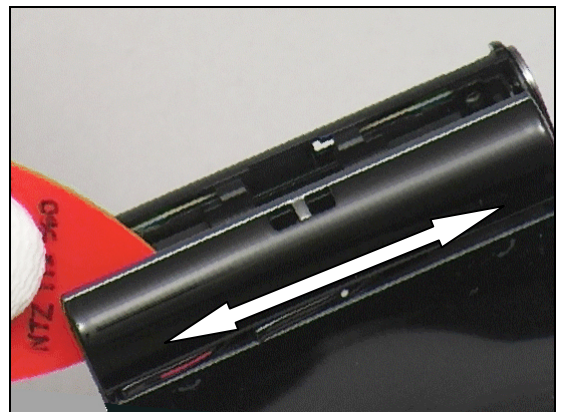
Unsnap one side with the plectrum.



Unsnap the other side.



Unsnap the bottom side.



Remove the Front Cover Sub Assy.

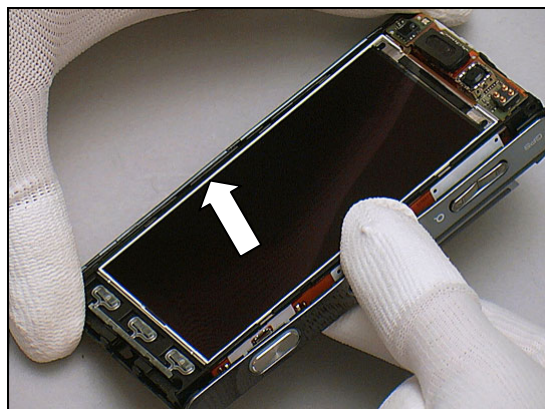




## Disassembly

### 3.6 Rear Cover Sub Assembly

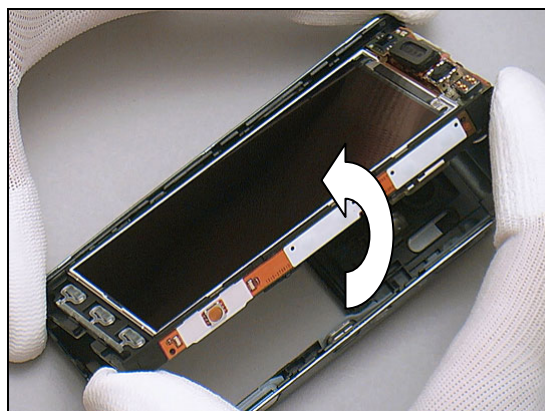
Release the Rear Cover Sub Assy from its cavity with fingers pushing against from behind as indicated.



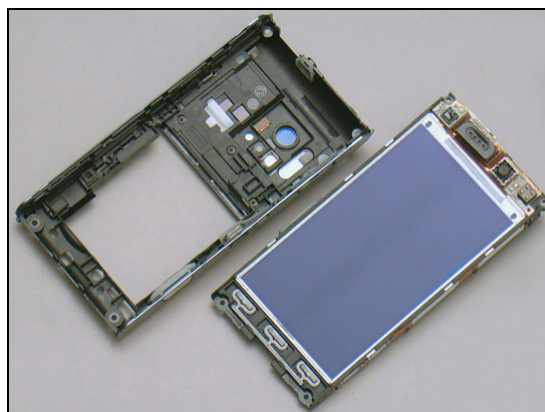
Unsnap the top right side with a nylon pointer.



Lift up the right side.



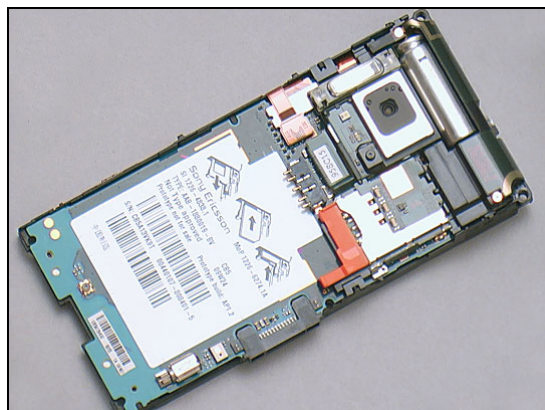
Separate the unit and the Rear Cover Sub Assy.



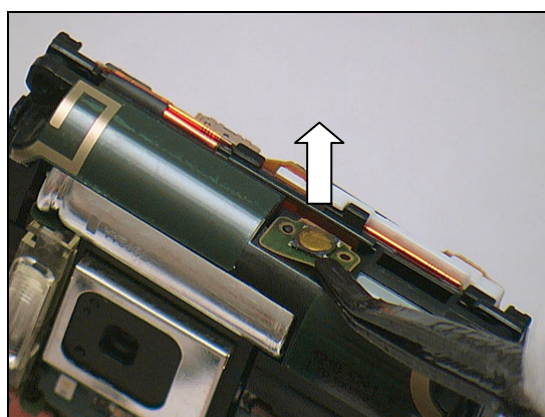
## Disassembly

### 3.7 Antenna(Wlan/GPS/Bluetooth)

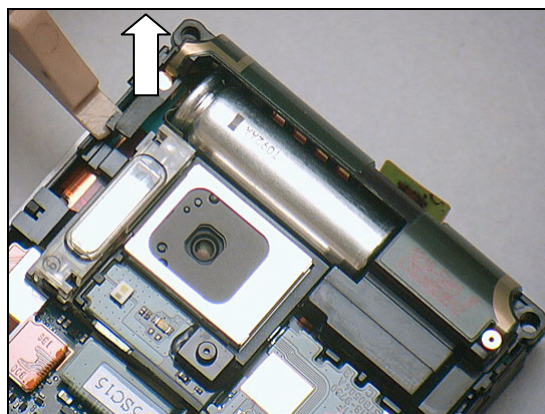
Turn the unit over.



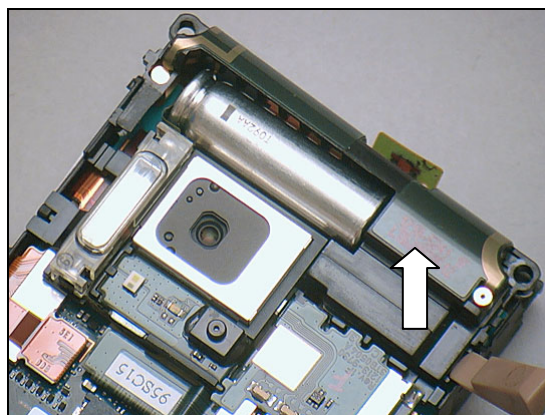
Detach the FPC Receiver connector from the Antenna with a flex film assembly tool.



Unsnap one hook with a front opening tool.



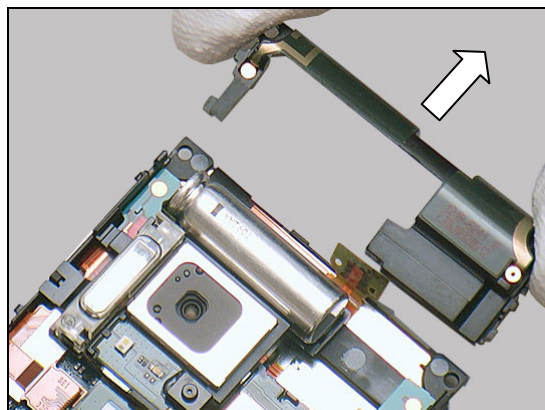
Unsnap the other hook.





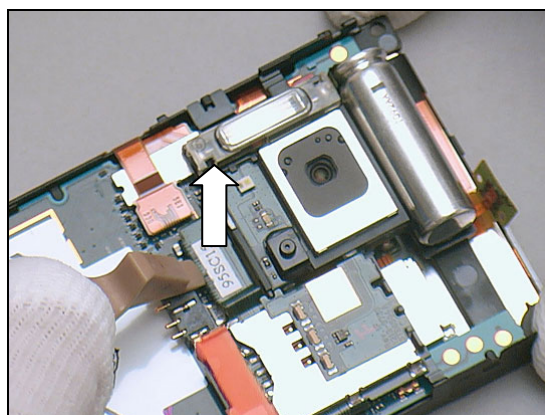
## Disassembly

Remove the Antenna.

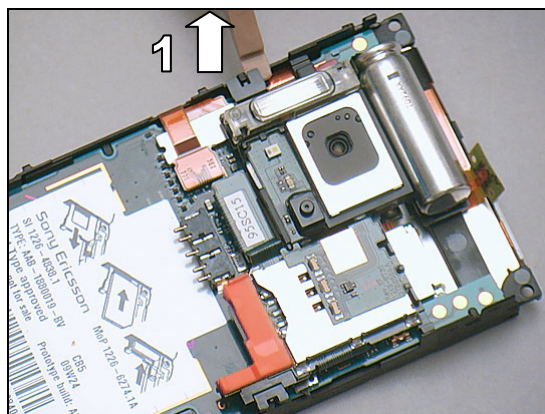


### 3.8 Xenon Flash Module

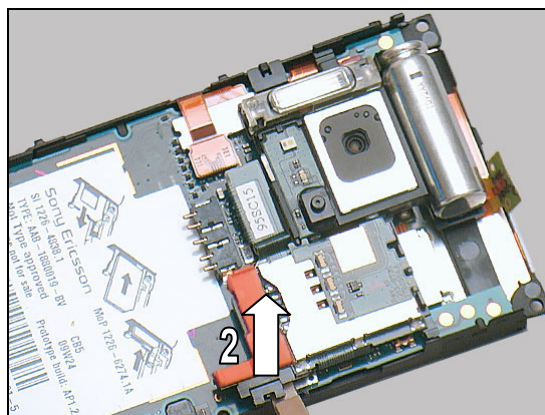
Disconnect the Xenon Flash Module connector from the PCB with a front opening tool.



There are three hooks securing the Xenon Flash Module. Unsnap the hook (1) with a front opening tool.

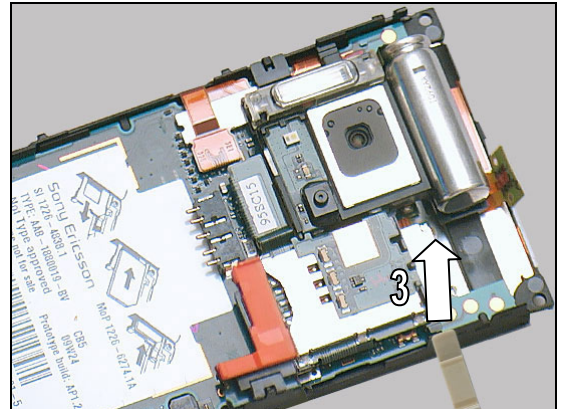


Unsnap the hook (2) with a front opening tool.

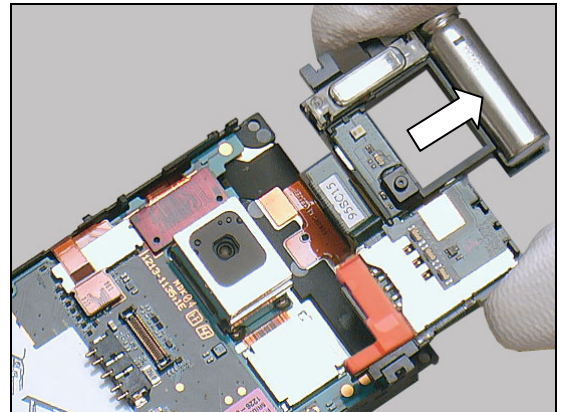


## Disassembly

Unsnap the hook (3) with a front opening tool.

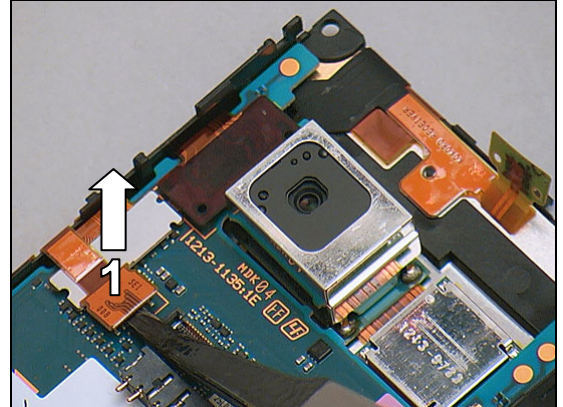


Lift and remove the Xenon Flash Module.

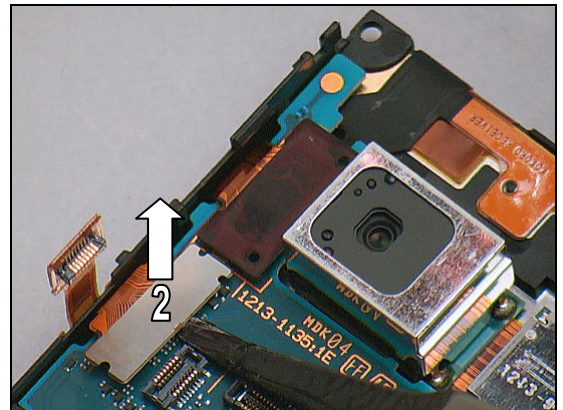


### 3.9 PCB & Frame PWB Sub Assembly with Display

Disconnect the FPC Side Key connector (1) on the PCB with a flex film assembly tool.



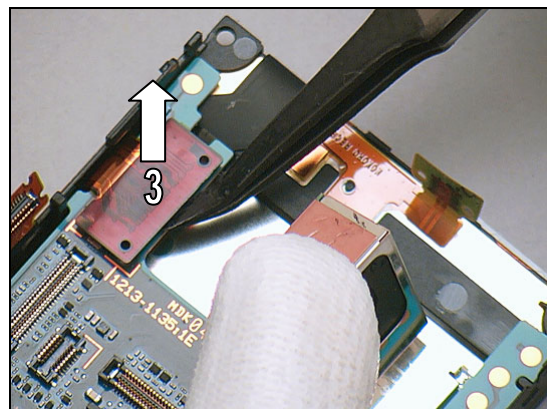
Disconnect the FPC Receiver connector (2).



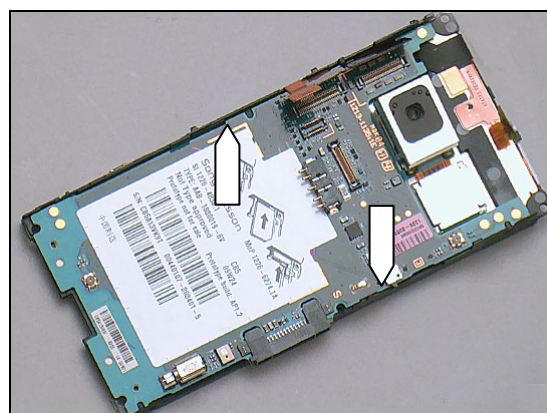


## Disassembly

Disconnect the Display connector (3) with a flex film assembly tool.

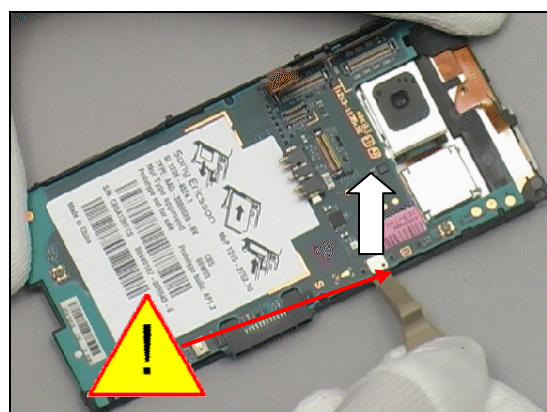


There are two hooks securing the PCB.

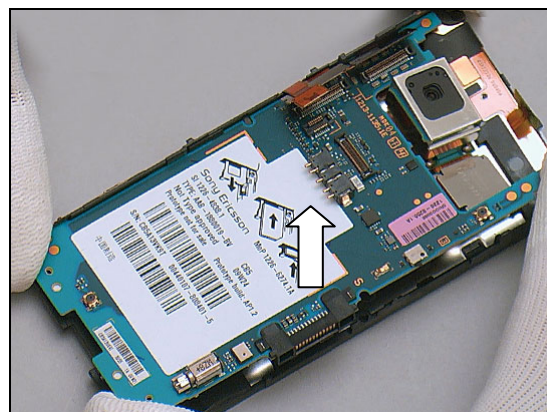


Unsnap one hook on right side with the front opening tool.

**Be careful not to break the locking nob.**

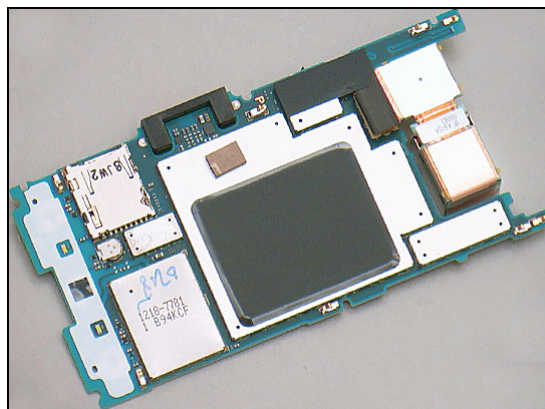


Lift up the right side of PCB and separate PCB from Rear Cover Sub Assembly.



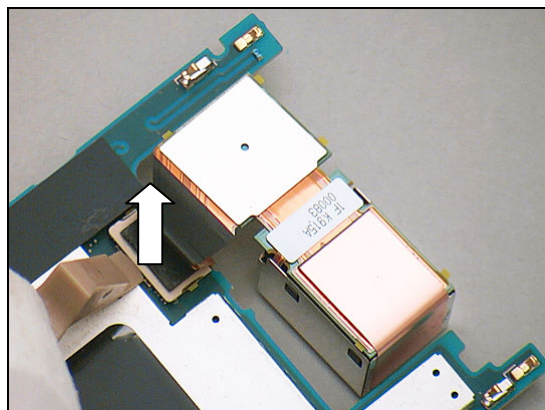
## Disassembly

Turn over the PCB.

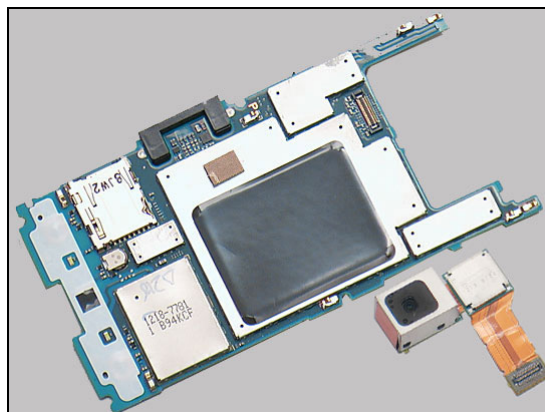


### 3.10 Camera 12.1M MPixel

Disconnect the Camera from the PCB with a front opening tool.



Separate the Camera and the PCB.



## 4 Replacement

### 4.1 Battery Cover

*Follow the 3.1 Disassembly instructions!*

Prepare a new Battery Cover.

*Follow the 5.10 Reassembly instructions!*



### 4.2 Rear Panel Sub Assy

*Follow the 3.3 Disassembly instructions!*

Prepare a new Rear Panel Sub Assy.

*Follow the 5.8 Reassembly instructions!*



### 4.3 Main Antenna

*Follow the 3.1-3.4 Disassembly instructions!*

Prepare a new Main Antenna.

*Follow the 5.7-5.10 Reassembly instructions!*



### 4.4 Front Cover Sub Assy

*Follow the 3.1-3.5, 4.40 Disassembly instructions!*

Prepare a new Front Cover Sub Assy.

*Follow the 5.6-5.10, 4.40 Reassembly instructions!*





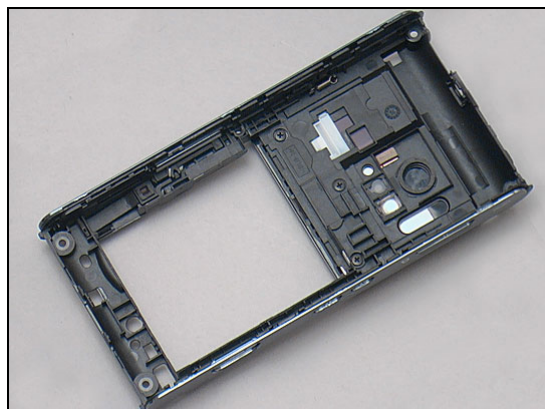
## Replacement

### 4.5 Rear Cover Sub Assy

*Follow the 3.1 – 3.6 Disassembly instructions!*

Prepare a new Rear Cover Sub Assy.

*Follow the 5.5 – 5.10 Reassembly instructions!*

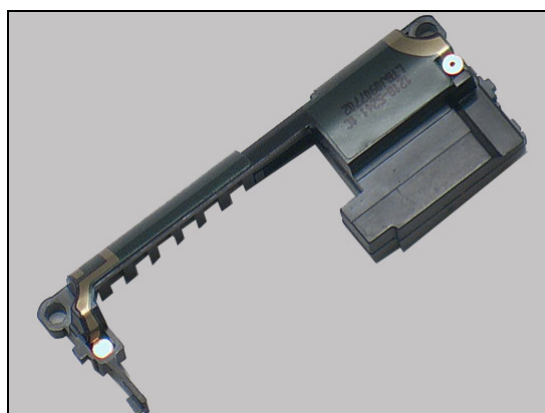


### 4.6 Antenna(Wlan/GPS/Bluetooth)

*Follow the 3.1 – 3.7 Disassembly instructions!*

Prepare a new Antenna.

*Follow the 5.4 – 5.10 Reassembly instructions!*

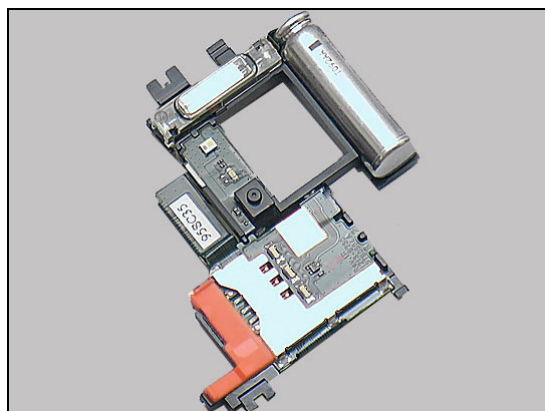


### 4.7 Xenon Flash Module

*Follow the 3.1 – 3.8 Disassembly instructions!*

Prepare a new Xenon Flash Module.

*Follow the 5.3 – 5.10 Reassembly instructions!*

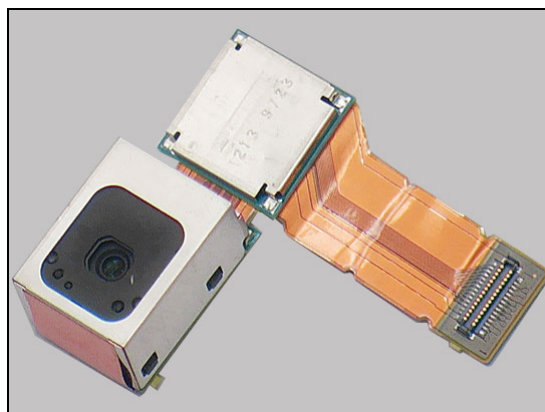


### 4.8 Camera 12.1M MPixel

*Follow the 3.1 – 3.10 Disassembly instructions!*

Prepare a new Camera 12.1M MPixel.

*Follow the 5.1 – 5.10 Reassembly instructions!*



## Replacement

### 4.9 Camera Key

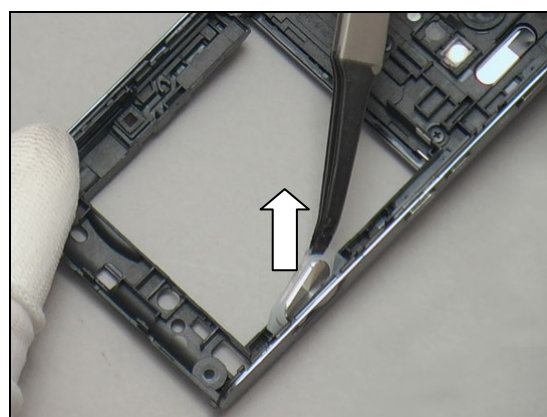
*Follow the 3.1 – 3.6 Disassembly instructions!*

Carry out the replacement as described below.

*Follow the 5.5 – 5.10 Reassembly instructions!*

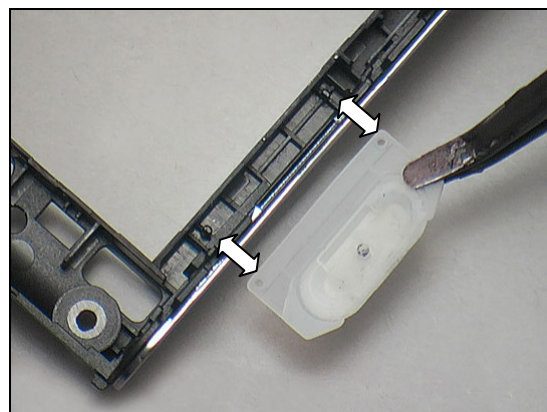
#### REMOVAL

Remove the Camera Key with a flex film assembly tool.

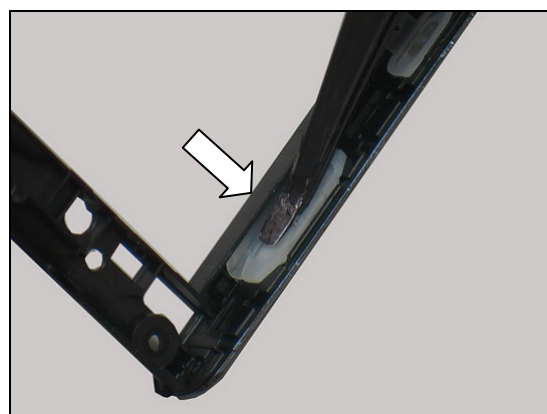


#### INSTALLATION

Install a new Camera Key aligned with the two guiding bolts.

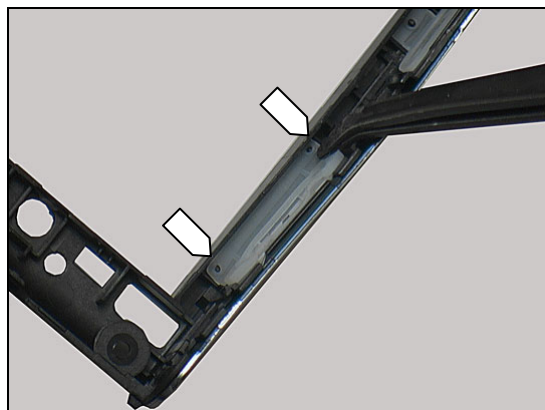


Put the Camera Key into its cavity.



## Replacement: Camera Key

Press the rubber part of the Camera Key to fasten it to the guiding bolts.



## Replacement

### 4.10 Camera QCIF Mpixel

*Follow the 3.1 – 3.9 Disassembly instructions!*

Carry out the replacement as described below.

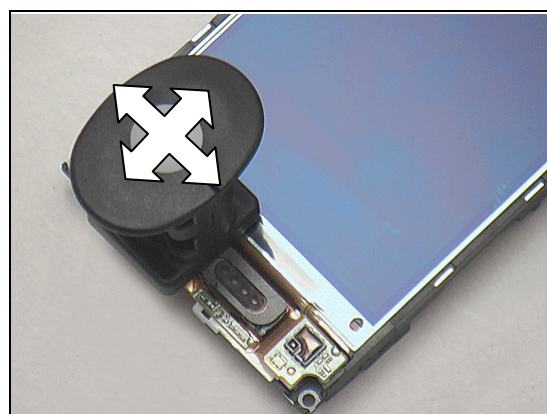
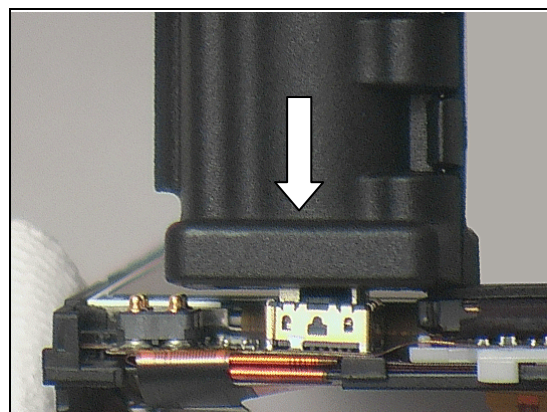
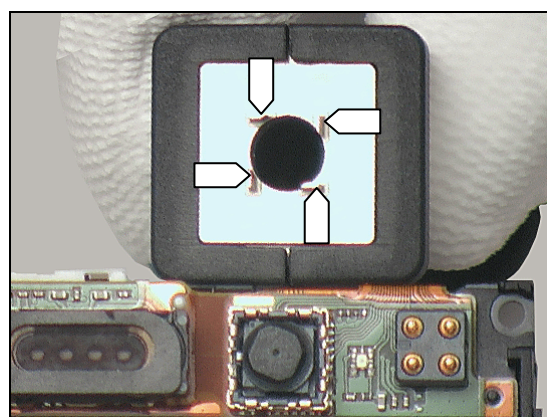
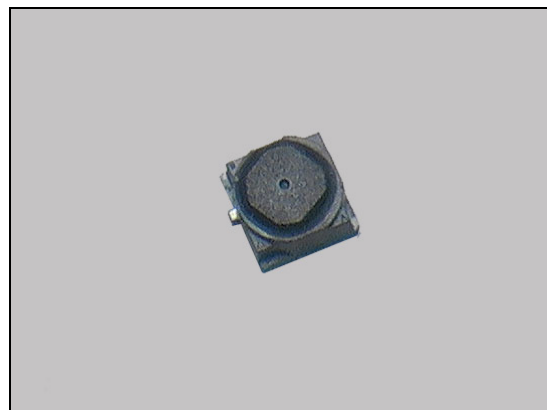
Follow the 5.2 – 5.10 Reassembly instructions!

#### REMOVAL

***Make sure the direction of the blades on the camera removal tool matches the position of the camera socket.***

Insert the camera removal tool as shown.

Wag the tool, as indicated by the arrow, to release the Camera QCIF MPixel from its socket.



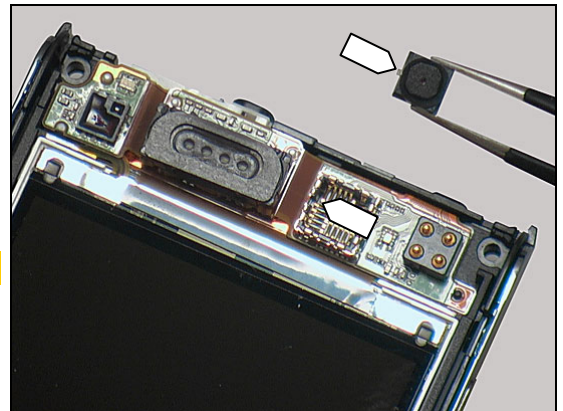


## Replacement: Camera QCIF Mpixel

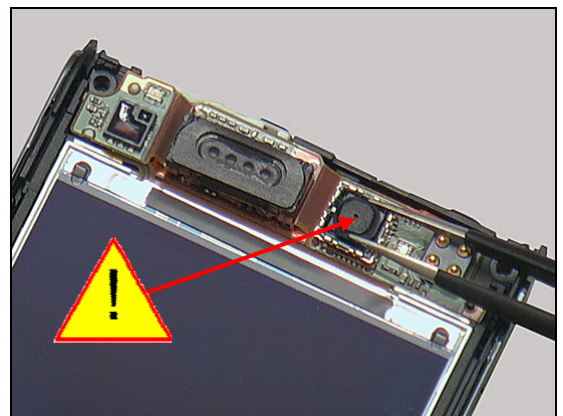
### INSTALLATION

Install a new Camera QCIF MPixel aligned with the guiding bolt.

***Make sure the direction is right.***



Press to secure the placement of the Camera with a pair of tweezers.



## Replacement

### 4.11 Carrier Holder Receiver

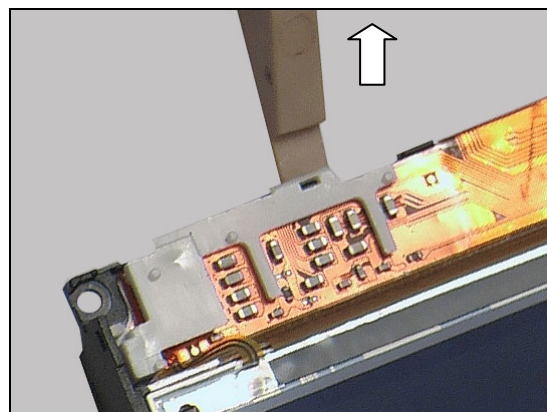
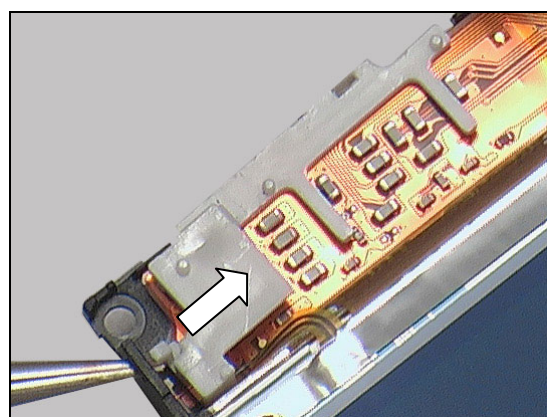
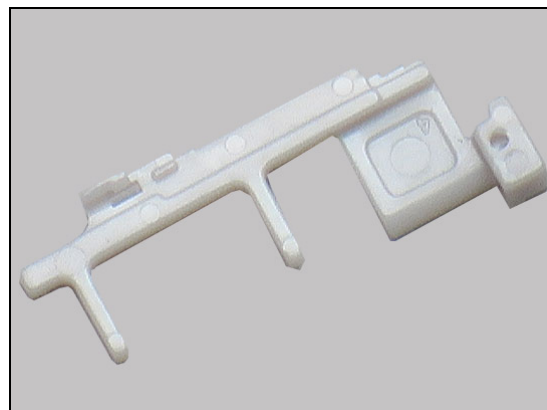
*Follow the 3.1 – 3.9, 4.22 Disassembly instructions!*

Carry out the replacement as described below.

*Follow the 5.2 – 5.10, 4.22 Reassembly instructions!*

#### REMOVAL

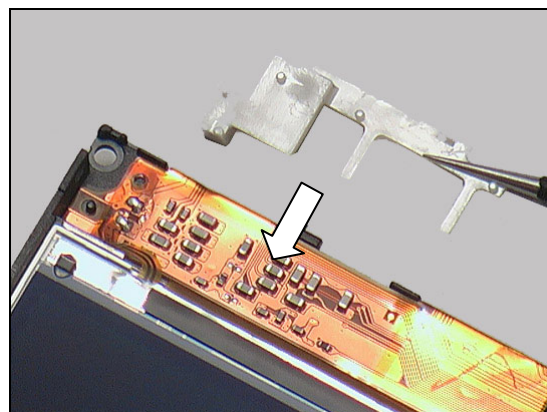
Push against the fastening bolt to release the Carrier Holder Receiver with a pair of tweezers.



Unsnap the hook with a front opening tool.

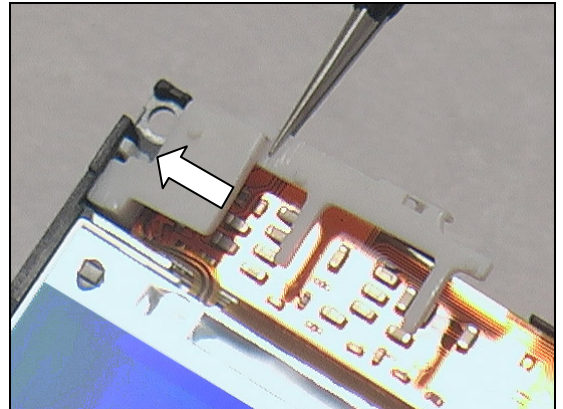
#### INSTALLATION

Install a new Carrier Holder Receiver.

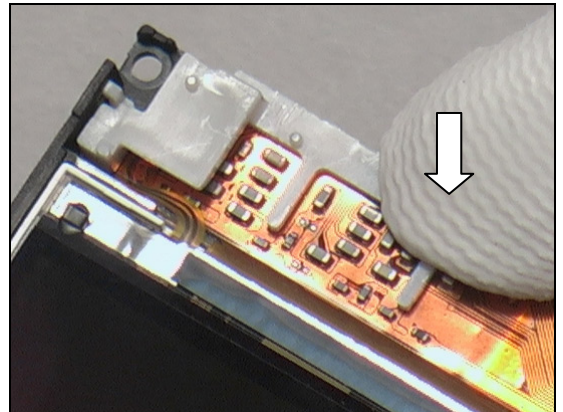


## Replacement: Carrier Holder Receiver

Insert the fastening bolt in its hole.



Press to snap the hook with a finger.





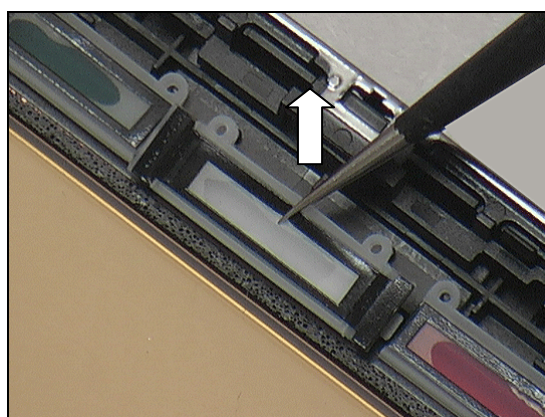
# Replacement

## 4.12 Center Key

*Follow the 3.1 – 3.5 Disassembly instructions!*  
 Carry out the replacement as described below.  
 Follow the 5.6 – 5.10 Reassembly instructions!

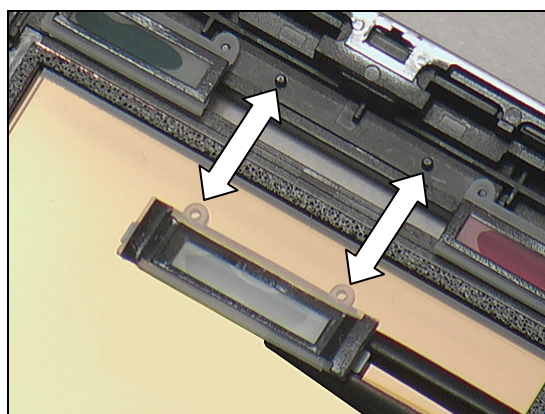
### REMOVAL

Remove the Center Key with a pair of tweezers.

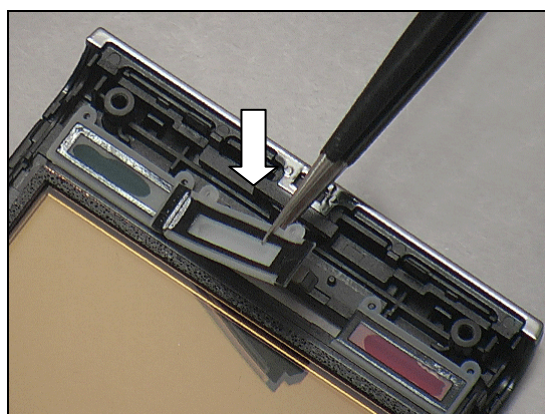


### INSTALLATION

Align a new Center Key with the two guiding bolts as indicated.



Insert the Center Key into the slot.



## Replacement

### 4.13 Core Unit Label

*Follow the 3.1 – 3.9 Disassembly instructions!*  
 Carry out the replacement as described below.  
*Follow the 5.2 – 5.10 Reassembly instructions!*

#### REMOVAL

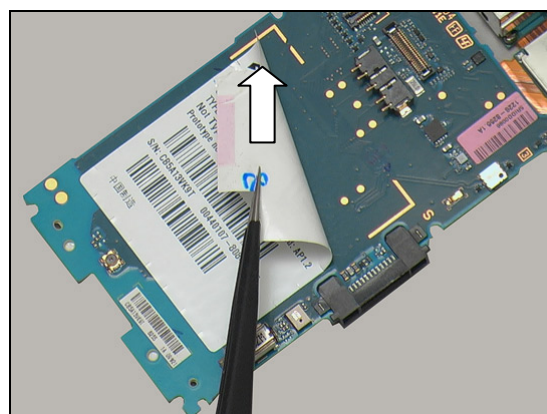
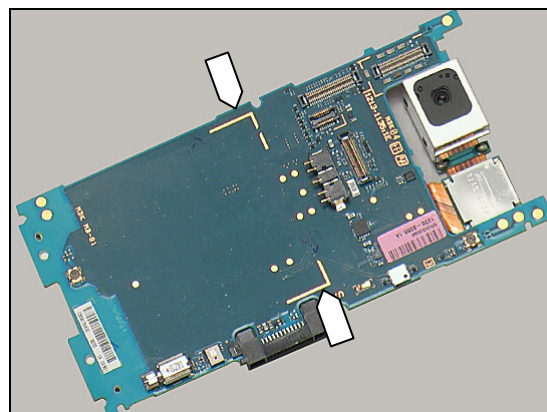
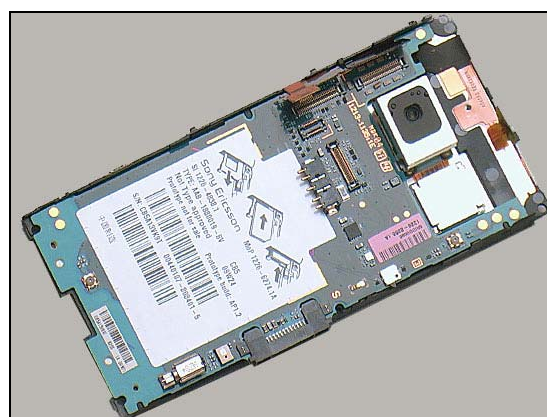
Read the old Core Unit Label and/or write the information into the 'LabelMake' program before removal.  
 Carefully remove the Label with the tweezers.

#### INSTALLATION

Check that the proper label format is loaded in the Zebra printer and write a new Label with the 'LabelMake' software.  
 The Label has to be positioned inside the 'golden' frame as indicated by the pointers.

Place the new Core Unit Label in place.

**One label only is allowed!**



## Replacement

### 4.14 Cushion Microphone

*Follow the 3.1 – 3.6 Disassembly instructions!*

Carry out the replacement as described below.

*Follow the 5.5 – 5.10 Reassembly instructions!*

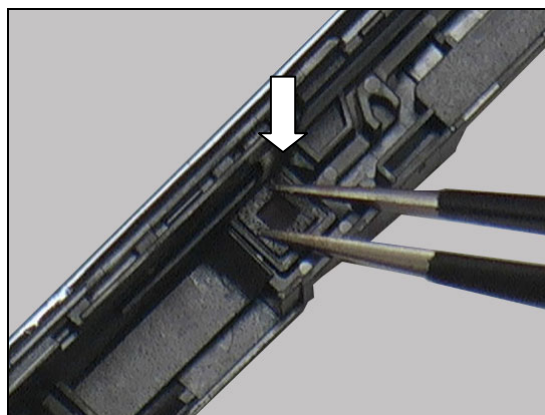
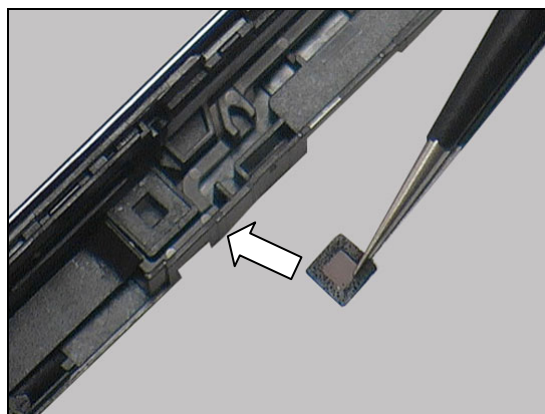
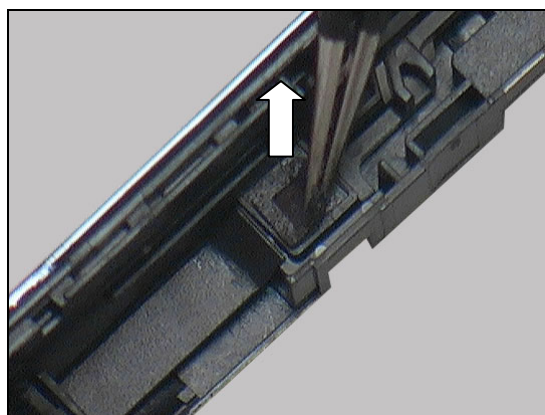
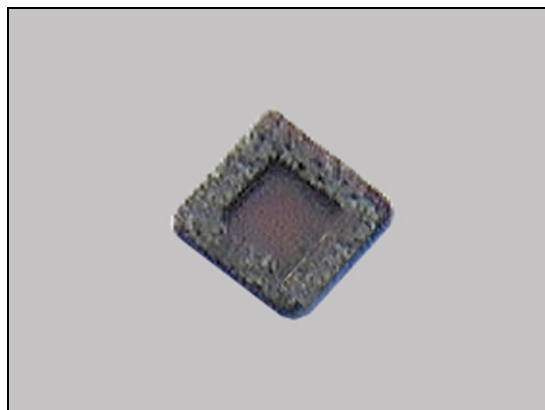
#### REMOVAL

Remove the Cushion Microphone with a pair of tweezers.

#### INSTALLATION

Place a new one in place.

Press to secure its attachment.





# Replacement

## 4.15 Cushion Tiger Module

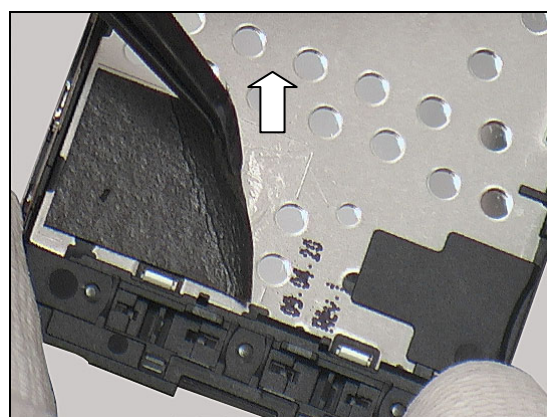
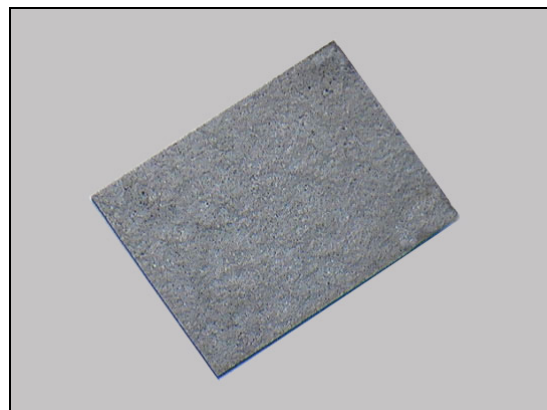
*Follow the 3.1 – 3.9 Disassembly instructions!*

Carry out the replacement as described below.

*Follow the 5.2 – 5.10 Reassembly instructions!*

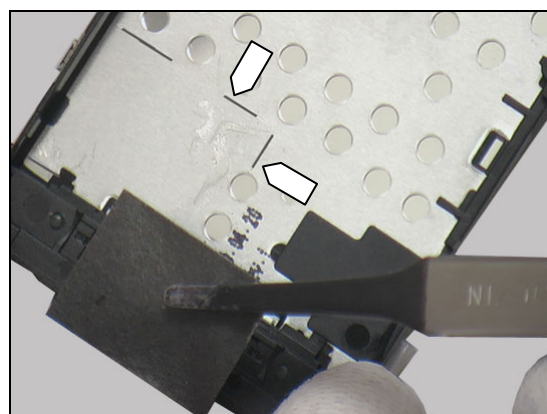
### REMOVAL

Detach the Cushion Tiger Module with a flex film assembly tool.

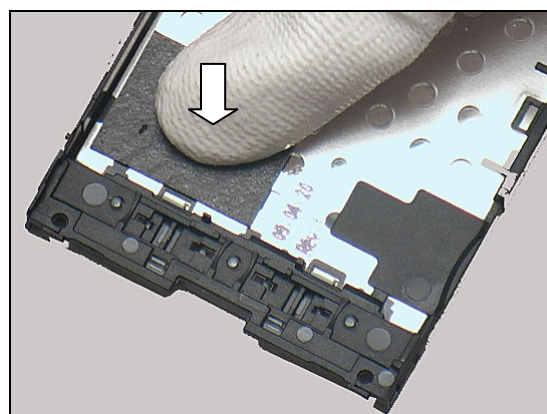


### INSTALLATION

Align a new Cushion Tiger Module with the guiding lines as indicated.



Press to secure its attachment.



## Replacement

### 4.16 Display 3.47 TFT

*Follow the 3.1 – 3.9 Disassembly instructions!*

*Follow the 4.22 Removal instructions!*

Carry out the replacement as described below.

*Follow the 4.22 Installation instructions!*

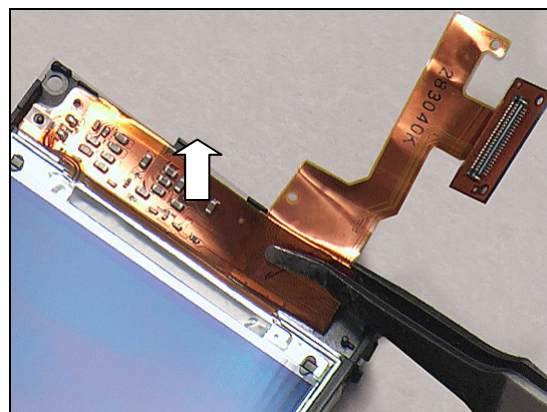
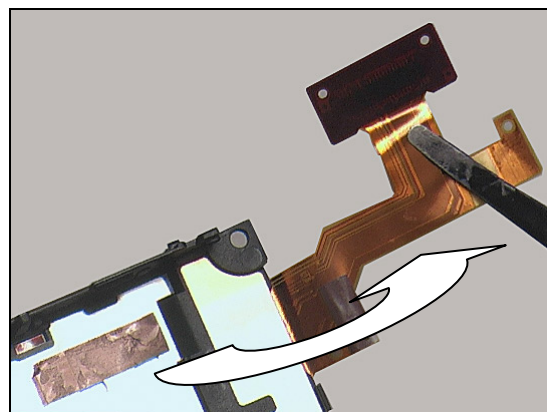
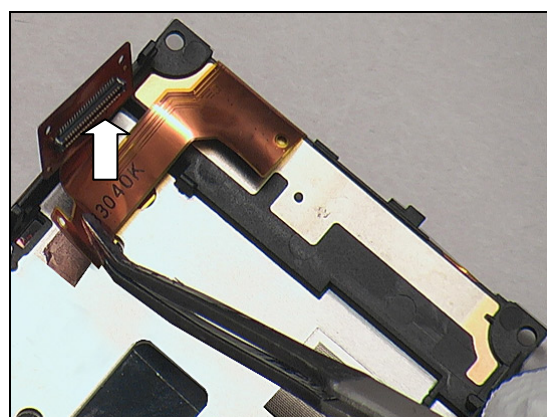
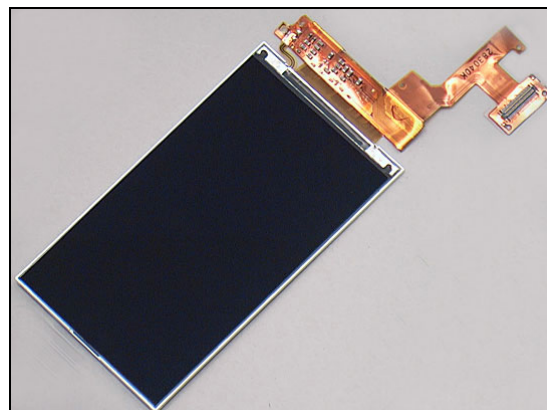
*Follow the 5.2 – 5.10 Reassembly instructions!*

#### REMOVAL

Detach the Display FPC with a flex film assembly tool.

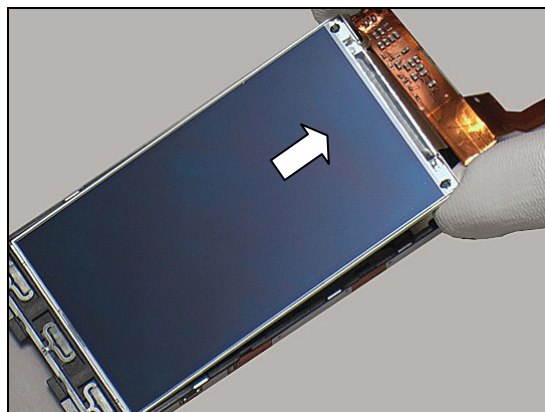
Fold the Display FPC over.

Turn the unit over and detach the Display FPC from front side.



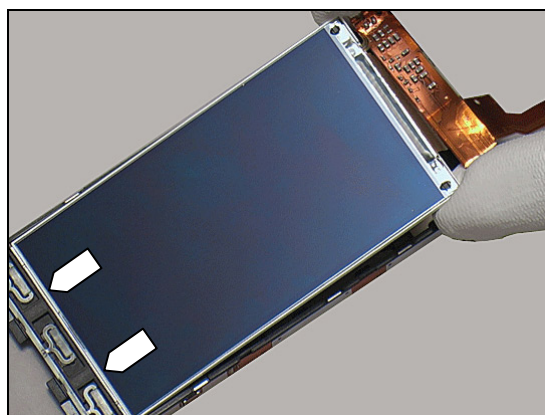
## Replacement: Display 3.47 TFT

Remove the Display.

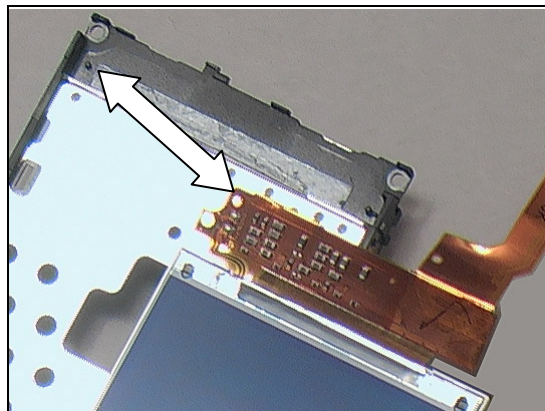


### INSTALLATION

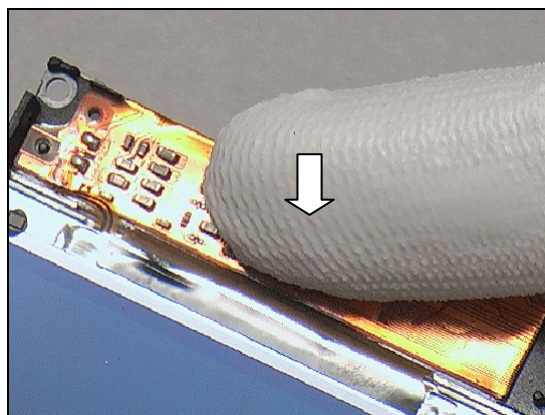
Fasten the Display to the Frame PWB Sub Assembly by the two hooks as indicated.



Align the guiding hole of a new Display with the guiding bolt on the Frame PWB Sub Assembly.



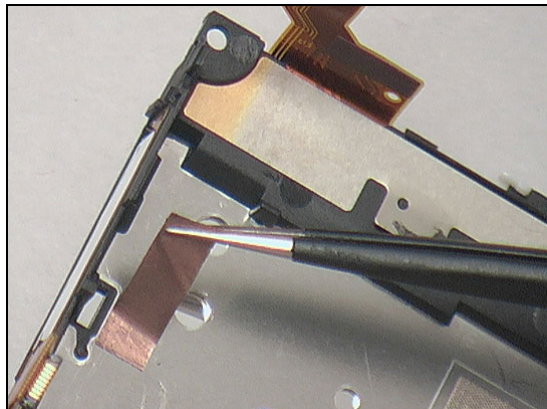
Press to attach the FPC firmly.



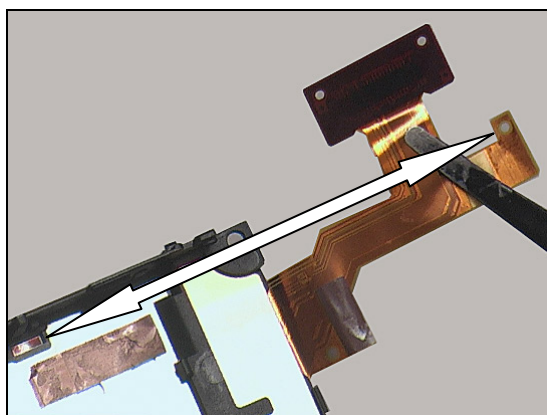


## Replacement: Display 3.47 TFT

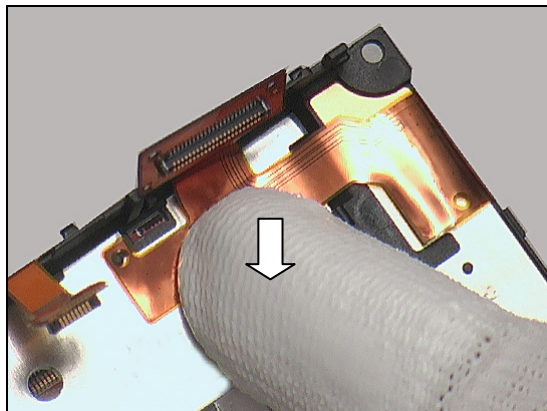
Turn the unit over and replace a new Foil Adhesive FPC LCD.



Turn the display FPC towards the Foil Adhesive FPC LCD aligning the guiding hole with the bolt.



Press with finger to make sure it is attached.





## Replacement

### 4.17 Send Key

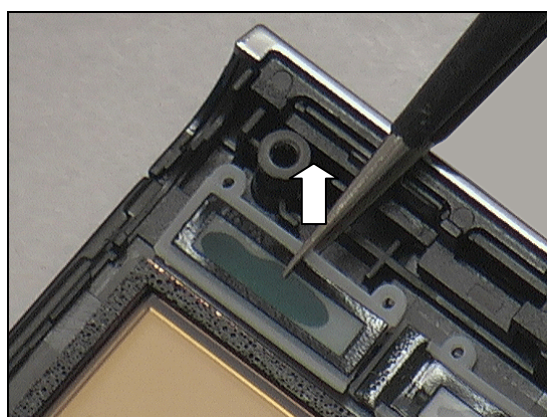
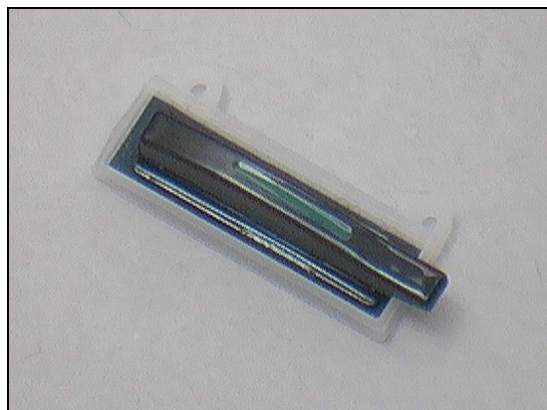
*Follow the 3.1 – 3.5 Disassembly instructions!*

Carry out the replacement as described below.

*Follow the 5.6 – 5.10 Reassembly instructions!*

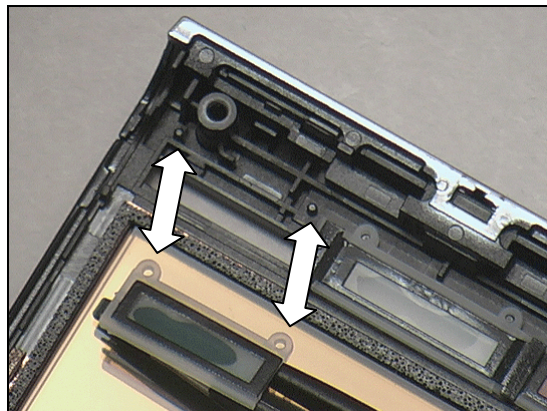
#### REMOVAL

Remove the Send Key with a pair of tweezers.

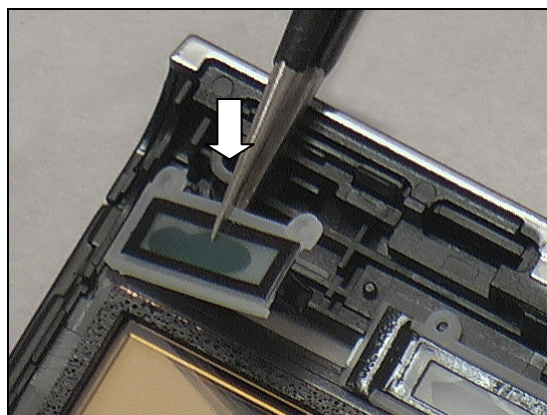


#### INSTALLATION

Align a new Send Key with the two guiding bolts as indicated.



Insert the Send Key into the slot.



## Replacement

### 4.18 Foil Adhesive Panel Front

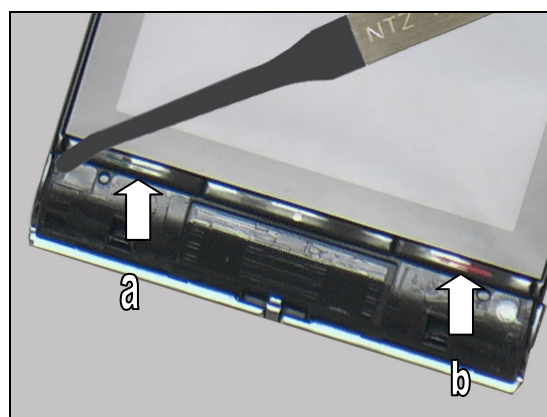
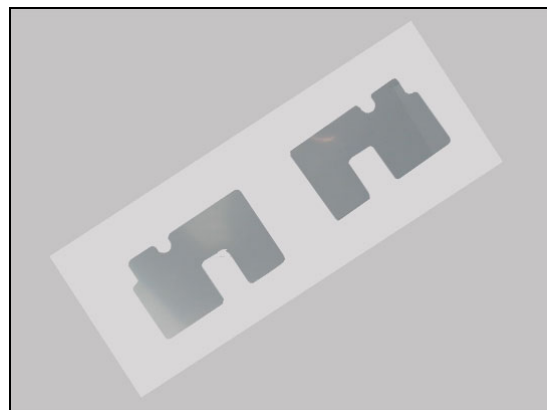
*Follow the 4.35 and 4.19 Disassembly and Removal instructions!*

Carry out the replacement as described below.

*Follow the 4.35 and 4.19 Installation and Reassembly instructions!*

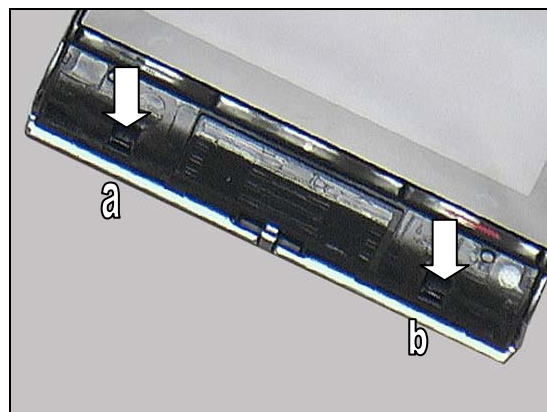
#### REMOVAL

Remove the Foil Adhesive left (a) and right (b).



#### INSTALLATION

Install a new pair of Foil Adhesive Panel Front.



## Replacement

### 4.19 Foil Adhesive Panel Front (Center)

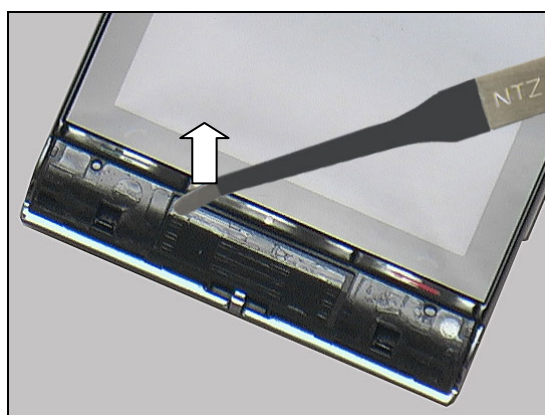
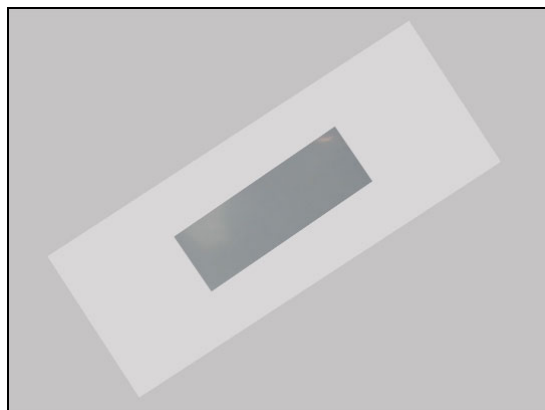
*Follow the 4.18 and 4.35 Disassembly and removal instructions!*

Carry out the replacement as described below.

*Follow the 4.18 and 4.35 Disassembly and installation instructions!*

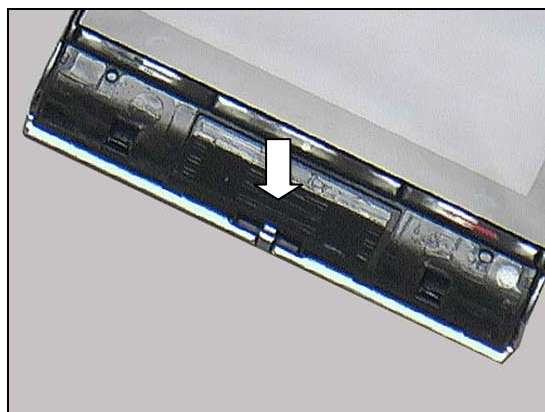
#### REMOVAL

Remove the Foil Adhesive Panel Front (Center).



#### INSTALLATION

Attach a new Foil Adhesive Panel Front (Center).





## Replacement

### 4.20 Foil Adhesive FPC LCD

*Follow the 3.1 – 3.9 Disassembly instructions!*

*Follow the 4.22 Removal instruction!*

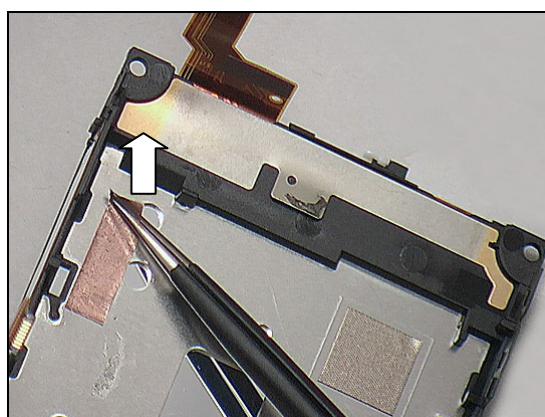
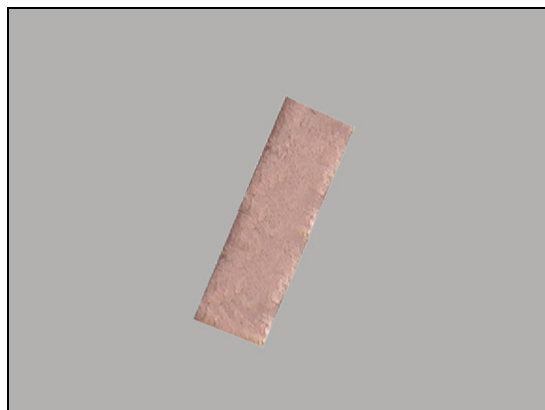
Carry out the replacement as described below.

*Follow the 4.22 Installation instruction!*

*Follow the 5.2 – 5.10 Reassembly instructions!*

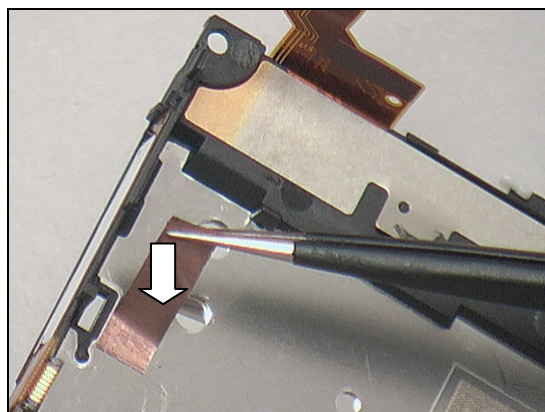
#### REMOVAL

Peel off the Foil Adhesive FPC LCD with a pair of tweezers.



#### INSTALLATION

Attach a new FPC LCD in place.



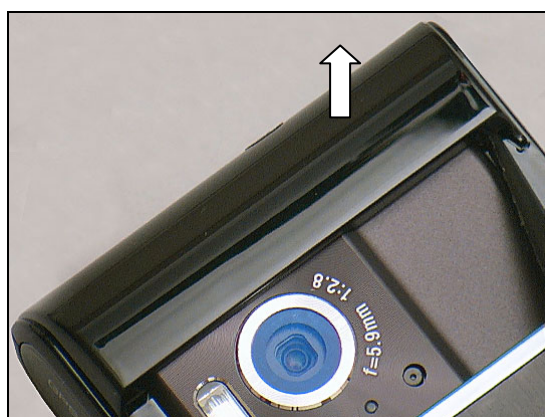
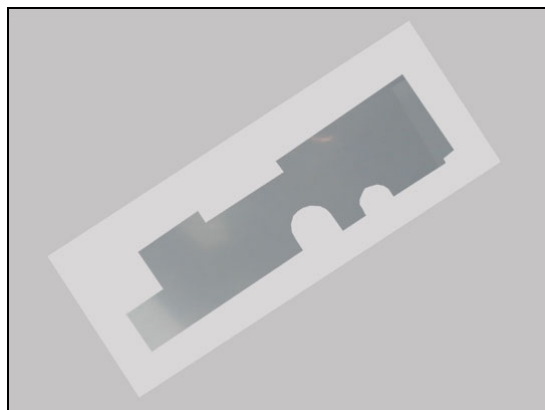
## Replacement

### 4.21 Foil Adhesive Panel Rear

Prepare a new Foil Adhesive Panel Rear.

#### REMOVAL

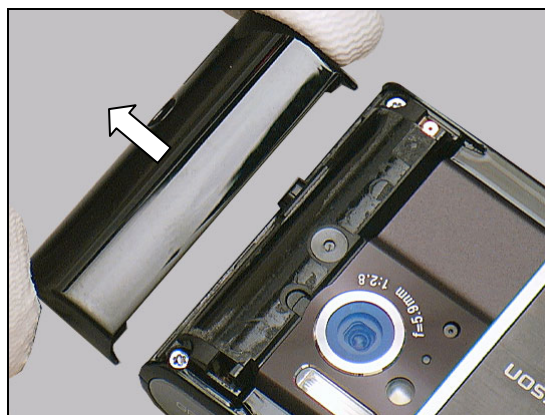
Detach one side of the Rear Panel Sub Assy with a nylon pointer.



Detach the other side of the Rear Panel Sub Assy.

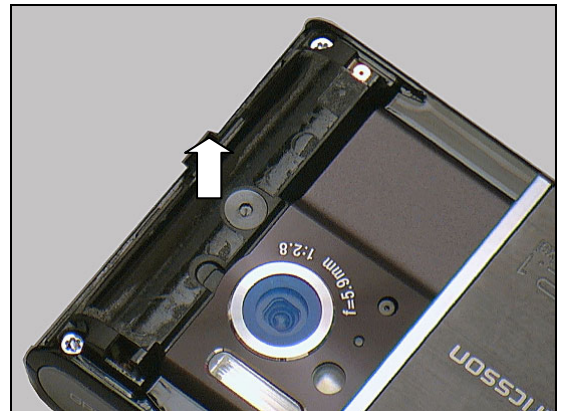


Remove it.



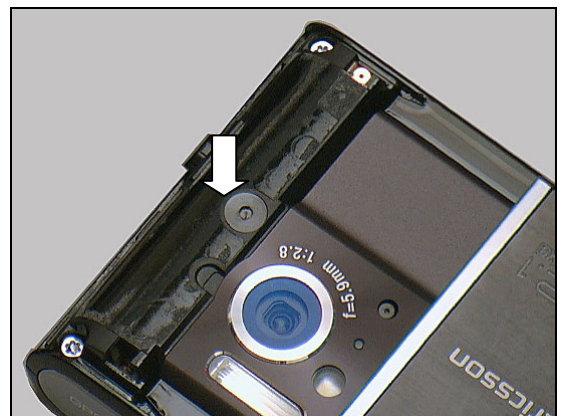
## Replacement: Foil Adhesive Panel Rear

Remove the Foil Adhesive Panel Rear.



### INSTALLATION

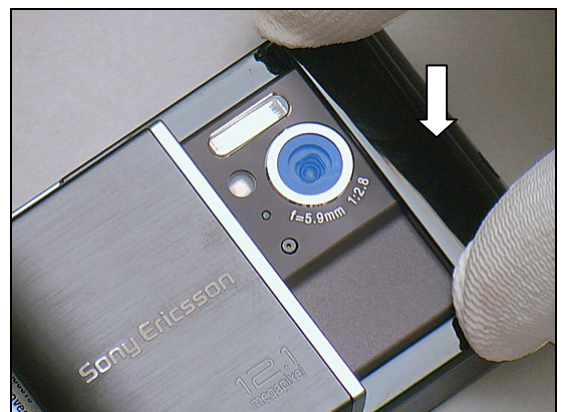
Install a new Foil Adhesive Panel Rear.



Attach the Panel Rear Sub Assy.



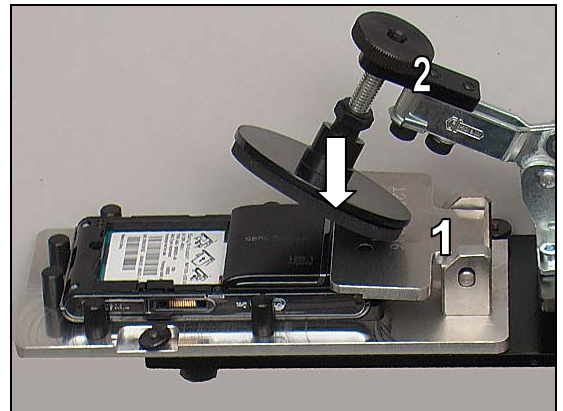
Press to snap the two hooks of the Rear Panel Sub Assy with fingers.





## Replacement: Foil Adhesive Panel Rear

Fasten the Rear Panel Pressure Tool Insert (1) to the Pressure tool (2).  
Put the phone in the Rear Panel Pressure Tool Insert as shown in the picture.  
Press it with a preset pressure value of  $150 \pm 5\text{N}$  for five to six seconds.



## Replacement

### 4.22 FPC Receiver

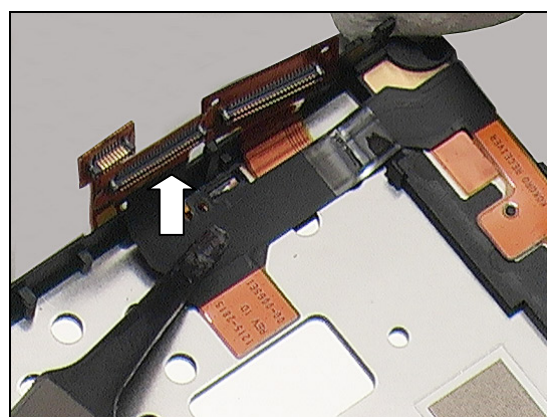
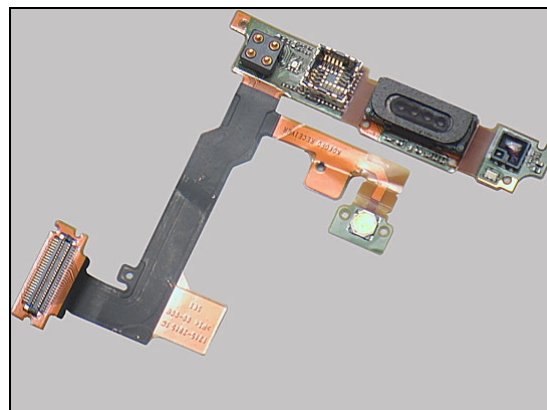
*Follow the 3.1 – 3.9 Disassembly instructions!*

Carry out the replacement as described below.

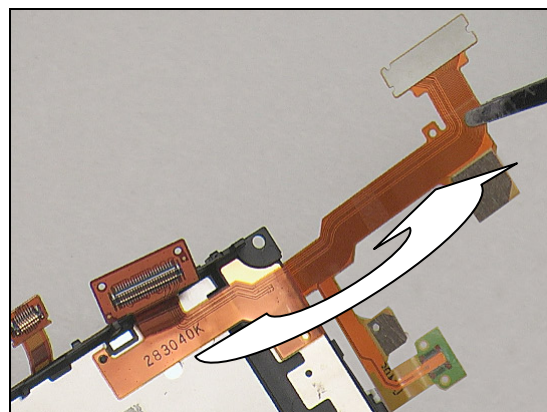
*Follow the 5.2 – 5.10 Reassembly instructions!*

#### REMOVAL

Detach the FPC Receiver with a flex film assembly tool.

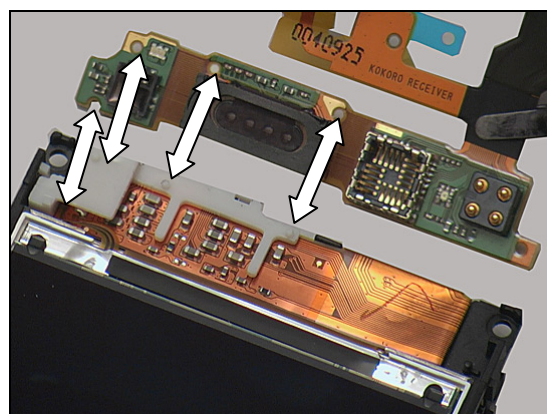


Fold the FPC over.



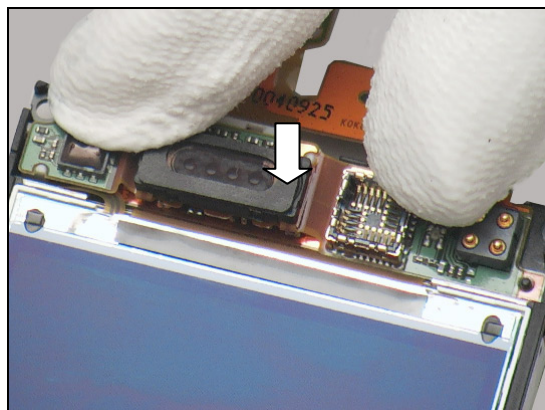
#### INSTALLATION

Attach a new FPC Receiver aligning the four guiding holes with the bolts on the Carrier Holder Receiver.

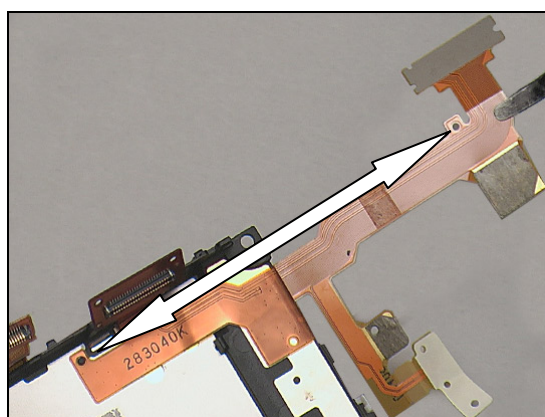


## Replacement: FPC Receiver

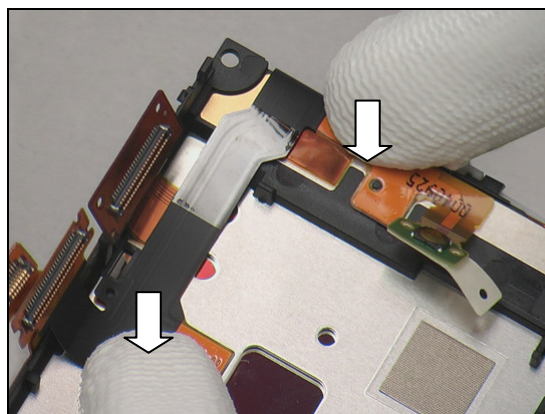
Press to attach it.



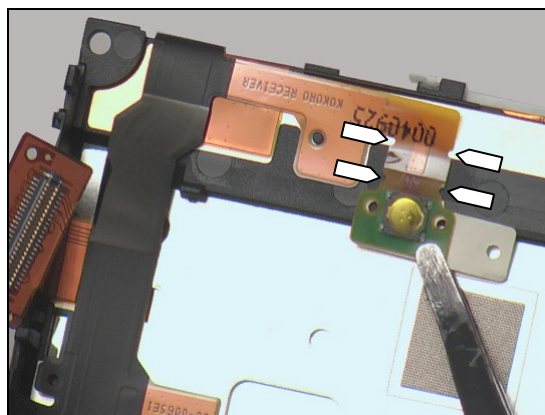
Turn the unit over and fold the FPC Receiver aligned the guiding holes.



Press with a finger to make sure it is attached.



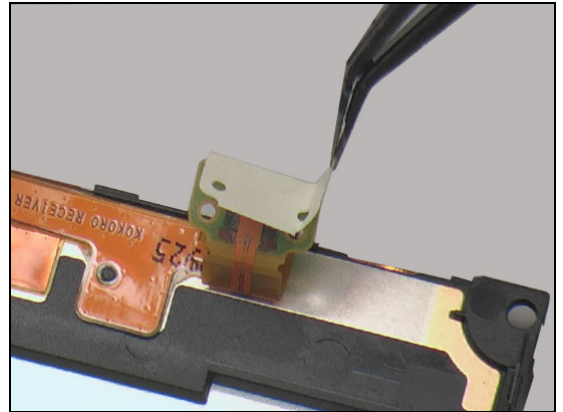
Fold the FPC Receiver outwards along the two lines indicated by the four arrows.





## Replacement: FPC Receiver

Remove the protection foil with the flex film assembly tool.



## Replacement

### 4.23 FPC Side Key

*Follow the 3.1 – 3.6 Disassembly instructions!*

Carry out the replacement as described below.

*Follow the 5.5 – 5.10 Reassembly instructions!*

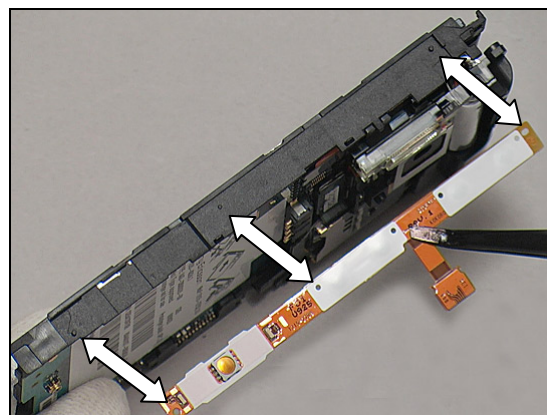
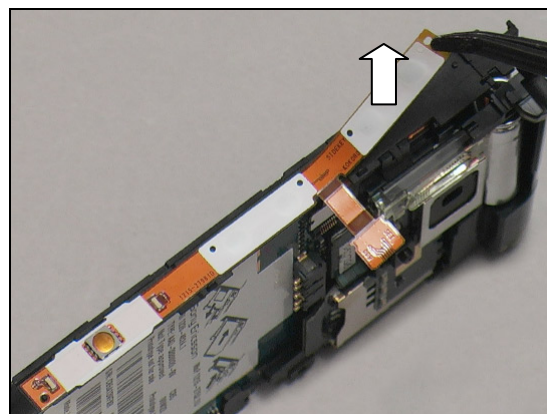
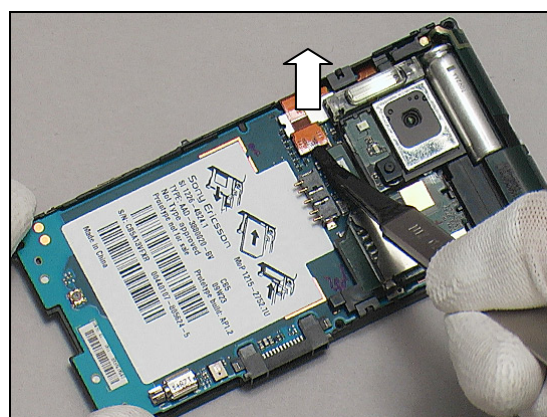
#### REMOVAL

Disconnect the FPC Side Key connector with a flex film assembly tool.

Detach the FPC Side Key.

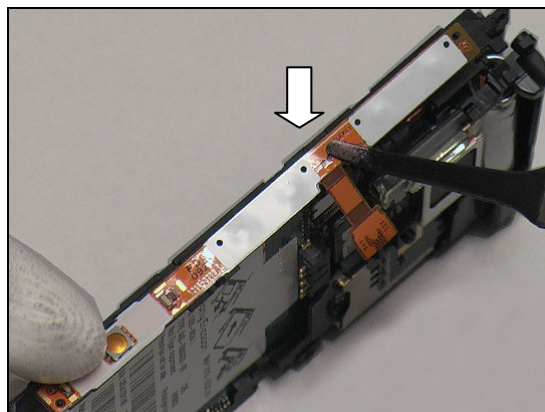
#### INSTALLATION

Align a new FPC Side Key with the guiding bolts as indicated.

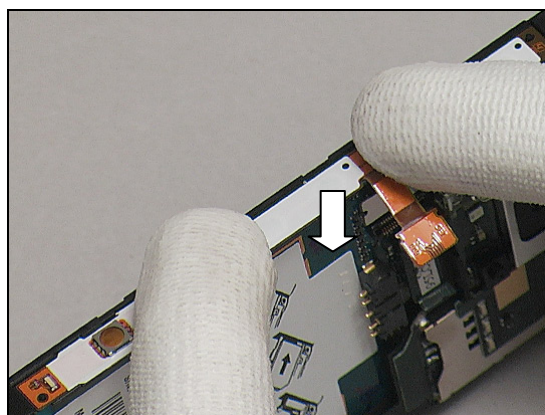


## Replacement: FPC Side Key

Attach the FPC Side Key in place with a flex film assembly tool.



Press to secure its attachment with fingers.



## 4.24 Frame PWB Sub Assembly

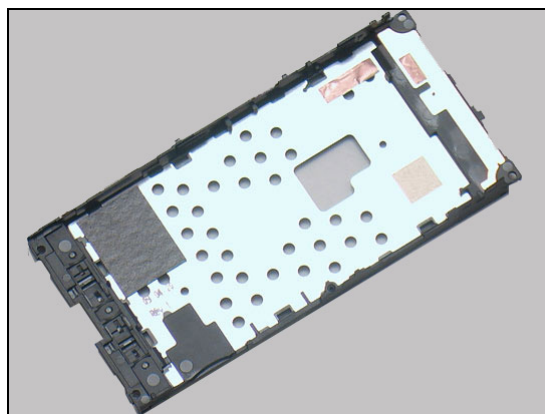
*Follow the 3.1 – 3.9 Disassembly instructions!*

*Follow the 4.16 and 4.22 Removal instructions!*

Prepare a new Frame PWB Sub Assembly.

*Follow the 4.16 and 4.22 Installation instructions!*

*Follow the 5.2 – 5.10 Reassembly instructions!*





## Replacement

### 4.25 Gasket (CAM)

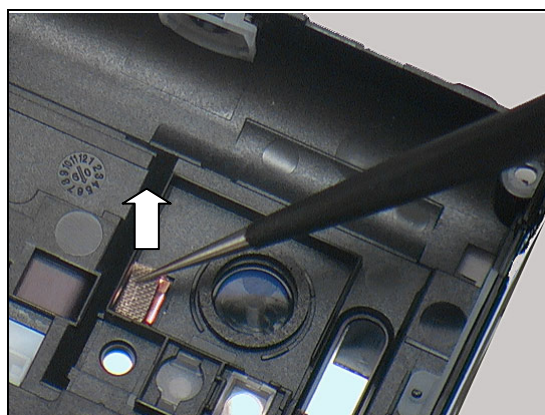
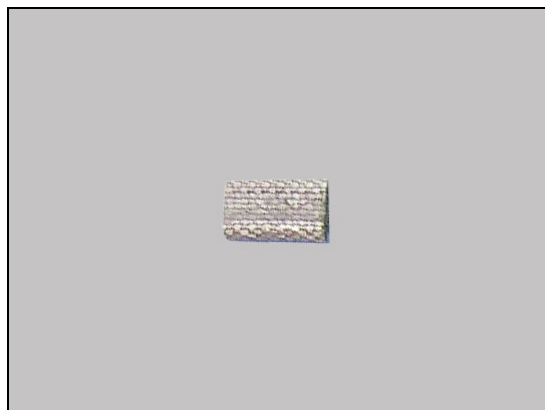
*Follow the 3.1 – 3.6 Disassembly instructions!*

Carry out the replacement as described below.

*Follow the 5.5 – 5.10 Reassembly instructions!*

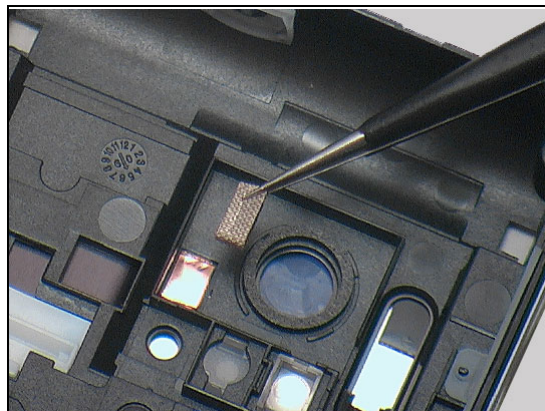
#### REMOVAL

Detach the Gasket with a pair of tweezers.

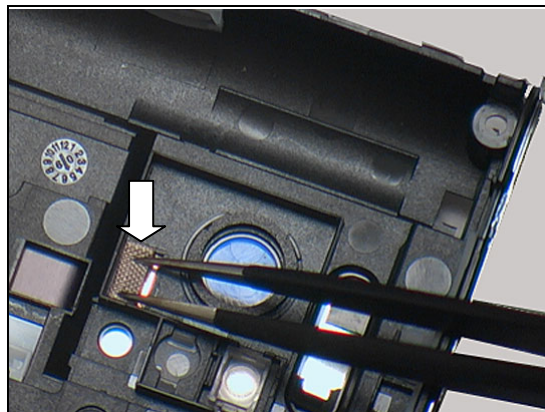


#### INSTALLATION

Attach a new Gasket in place.



Press to secure the attachment.



# Replacement

## 4.26 Gasket (BB)

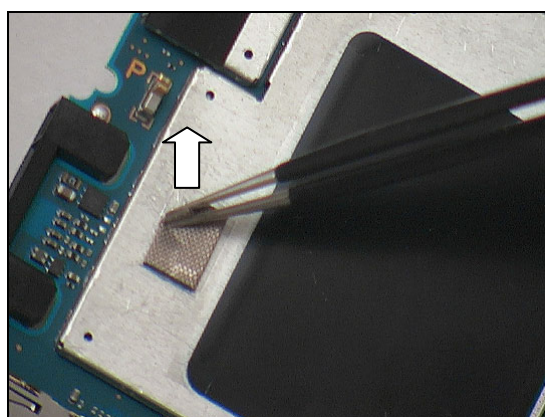
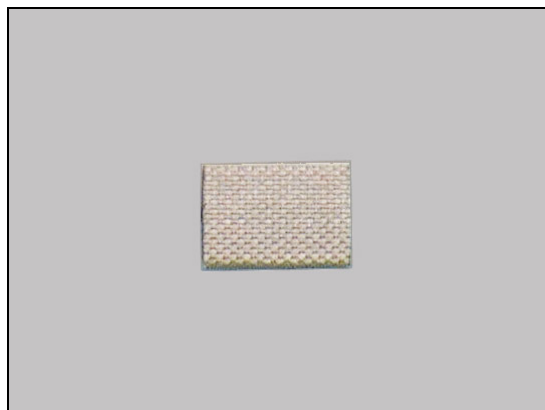
*Follow the 3.1 – 3.9 Disassembly instructions!*

Carry out the replacement as described below.

*Follow the 5.2 – 5.10 Reassembly instructions!*

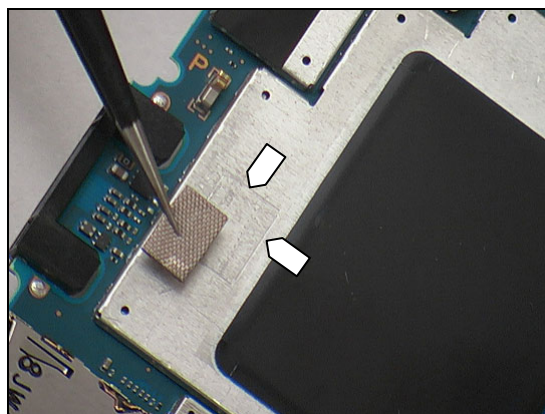
### REMOVAL

Detach the Gasket with a pair of tweezers.

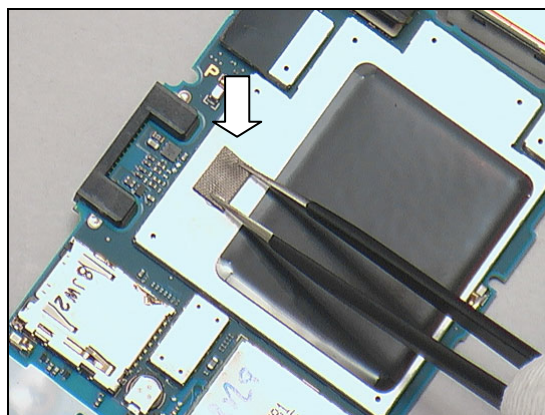


### INSTALLATION

Attach a new Gasket aligning the guiding lines as indicated.



Press to secure its attachment.



## Replacement

### 4.27 Gasket LCD

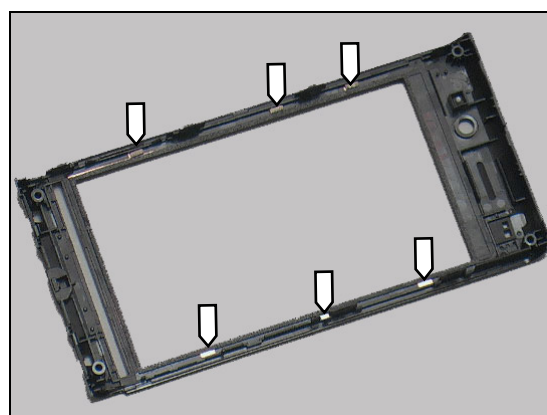
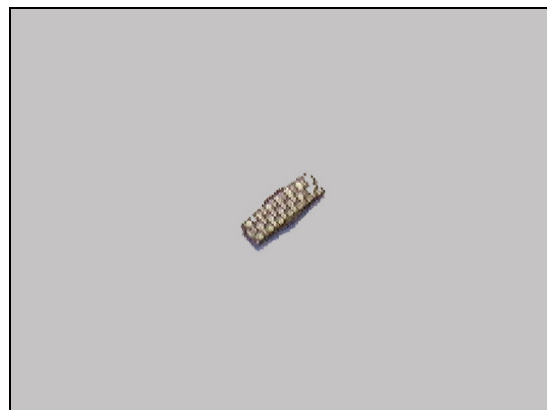
*Follow the 3.1 – 3.5 Disassembly instructions!*

Carry out the replacement as described below.

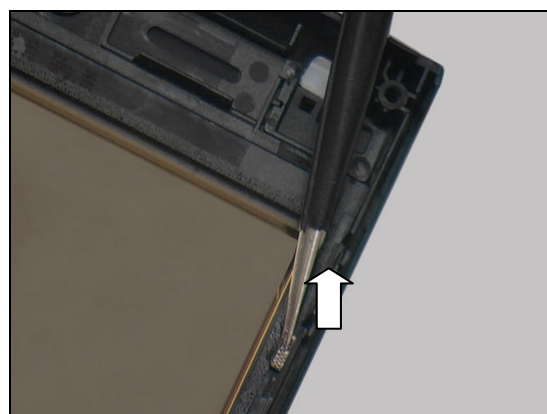
*Follow the 5.6 – 5.10 Reassembly instructions!*

#### REMOVAL

There are six Gasket LCDs located as shown.

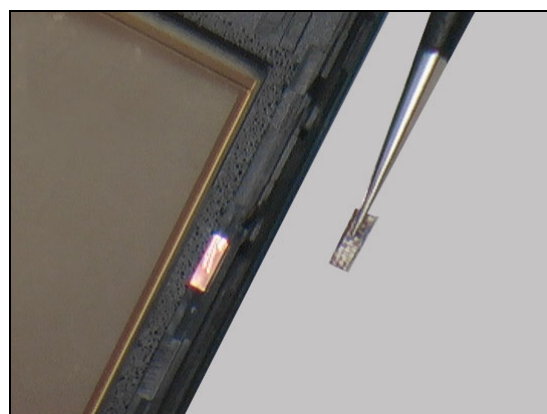


Detach the Gasket LCDs one by one with the tweezers.



#### INSTALLATION

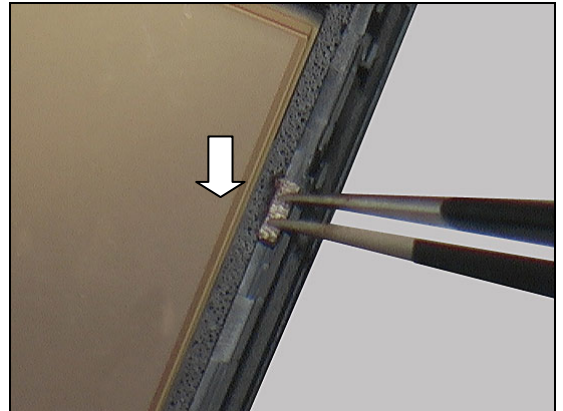
Place the new Gasket LCDs in place one by one.





## Replacement: Gasket LCD

Press to secure the attachment.



## Replacement

### 4.28 Input Switch Jog Dial

*Follow the 3.1 – 3.9 Disassembly instructions!*

Carry out the replacement as described below.

*Follow the 5.2 – 5.10 Reassembly instructions!*

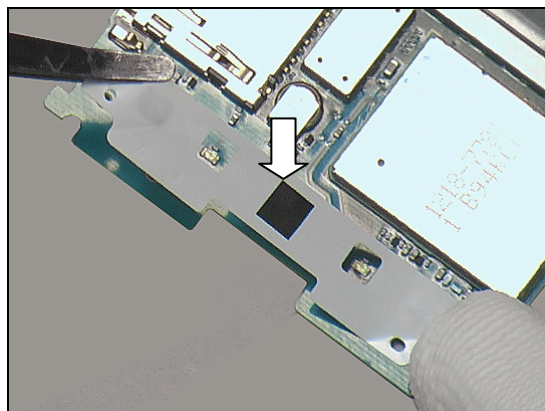
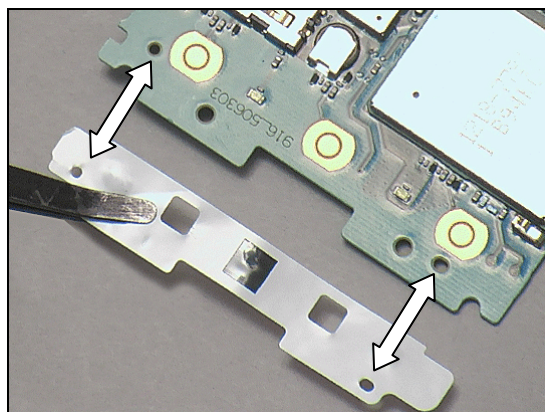
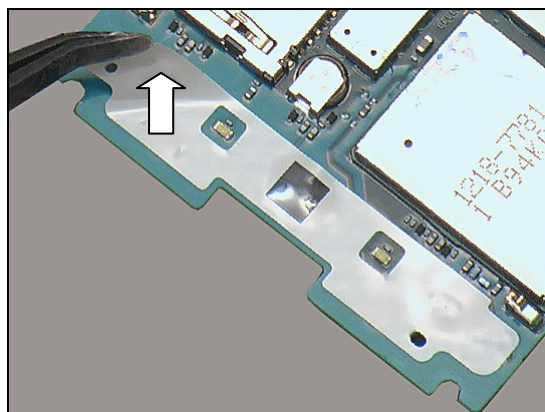
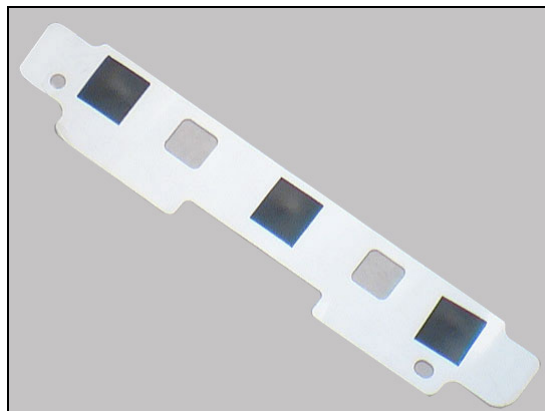
#### REMOVAL

Detach the Input Switch Jog Dial with a flex film assembly tool.

#### INSTALLATION

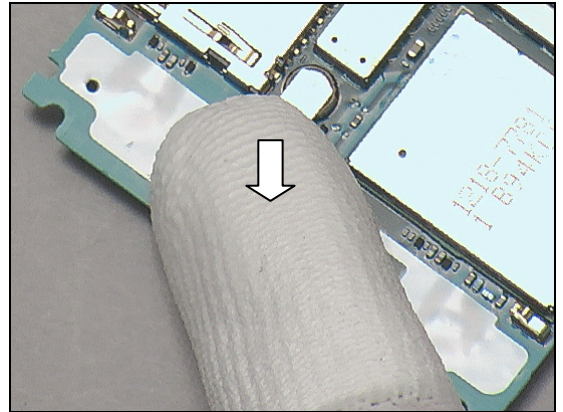
Align a new Input Switch Jog Dial with the guiding holes.

Attach it in place.



## Replacement: Input Switch Jog Dial

Press with a finger to secure it is attached.





## Replacement

### 4.29 Liquid Intrusion Indicator INSPECTION

To check whether the Liquid Intrusion Indicator has been activated (reddish colour), just remove the Battery Cover and the Battery.

If activated:

*Follow the 3.1 – 3.2 Disassembly instructions!*

Carry out the replacement as described below.

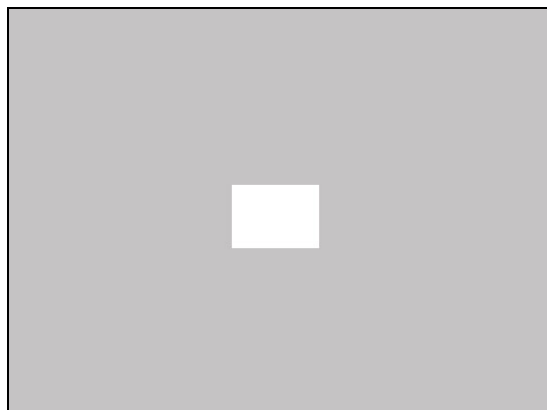
*Follow the 5.9 – 5.10 Reassembly instructions!*

### REMOVAL

Insert the dentist hook into the corner of the activated Liquid Intrusion Indicator and pull upwards to detach it.

### INSTALLATION

Attach a new Liquid Intrusion Indicator.



## Replacement

### 4.30 MComp Sheet VIB

*Follow the 3.1 – 3.6 Disassembly instructions!*

Carry out the replacement as described below.

*Follow the 5.5 – 5.10 Reassembly instructions!*

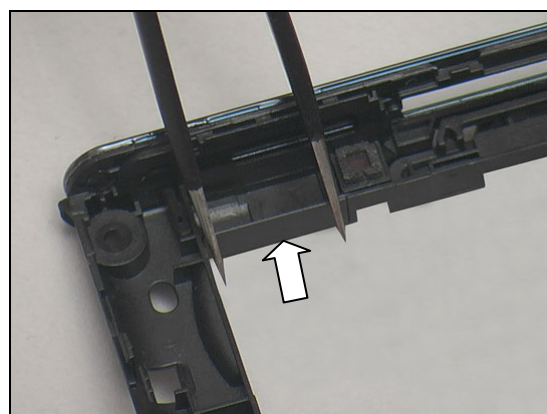
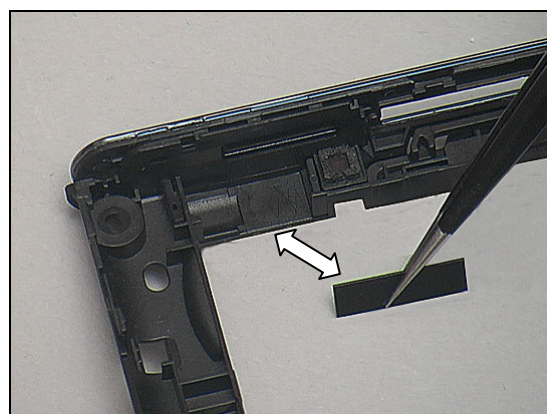
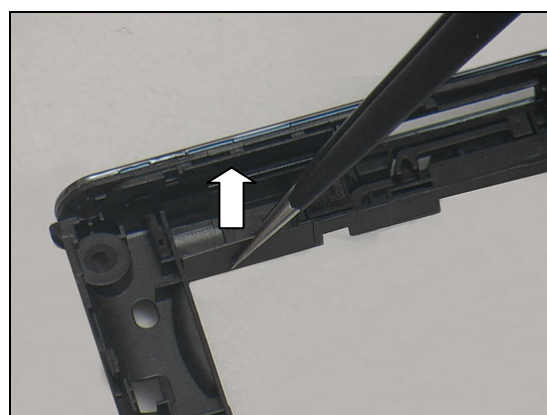
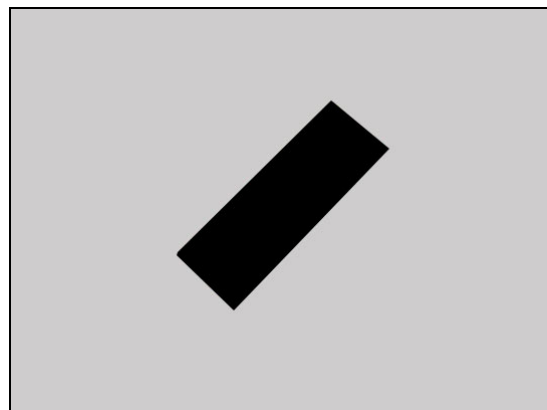
#### REMOVAL

Detach the MComp Sheet VIB with a pair of tweezers.

#### INSTALLATION

Attach a new MComp Sheet VIB in place with a pair of tweezers.

Press to make sure the attachment.



## Replacement

### 4.31 Micro Cap SD

Carry out the replacement as described below.

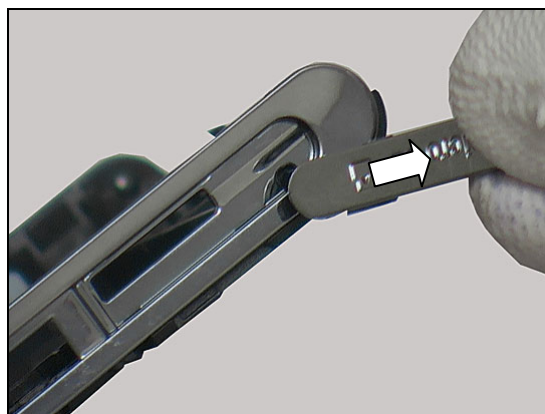
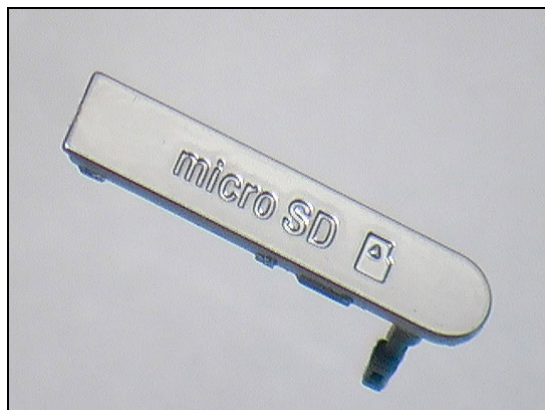
#### REMOVAL

Use a front opening tool to open the Micro Cap SD.

Remove the Micro Cap SD by pulling out the tab that hooks it to the phone.

#### INSTALLATION

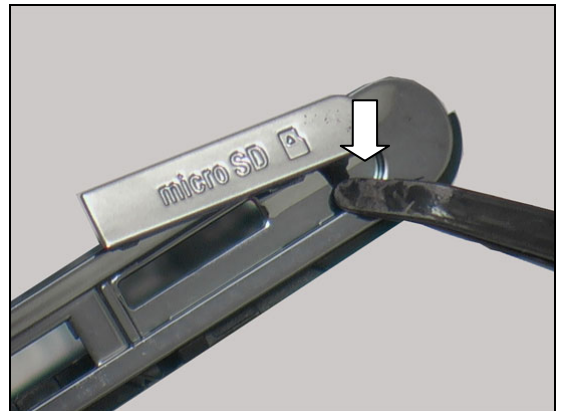
Install a new Micro Cap SD.



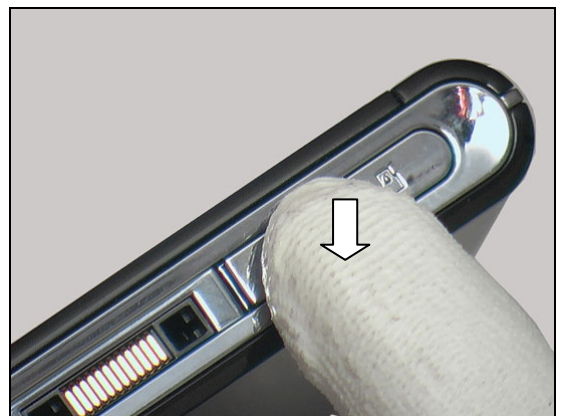


## Replacement: Micro Cap SD

Press the tab of the Micro Cap SD into the small hole with a flex film assembly tool.



Snap to close the Micro Cap SD.



## Replacement

### 4.32 Mode Key

*Follow the 3.1 – 3.6 Disassembly instructions!*

Carry out the replacement as described below.

*Follow the 5.5 – 5.10 Reassembly instructions!*

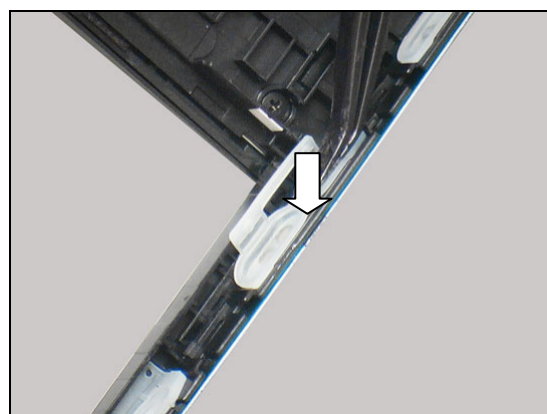
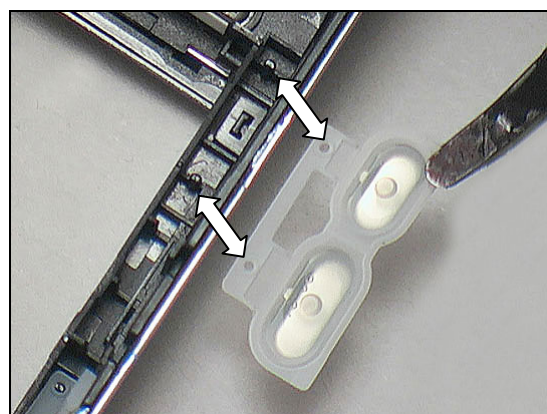
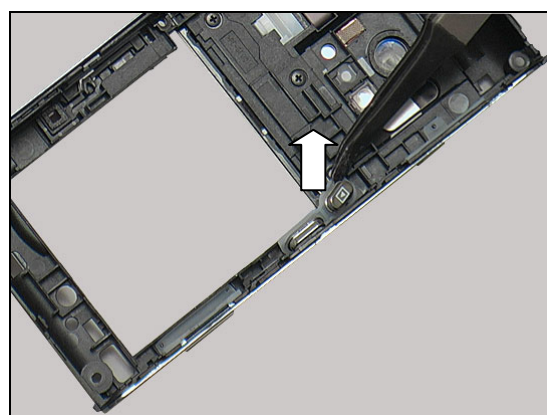
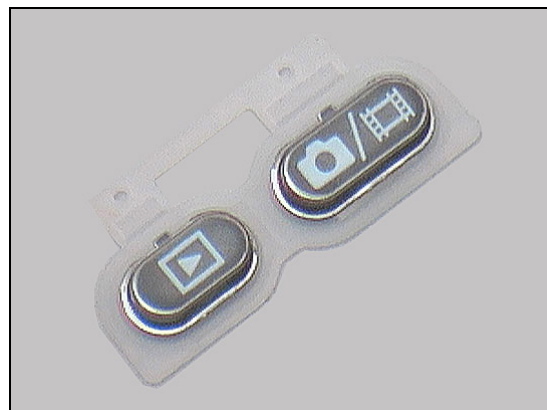
#### REMOVAL

Remove the Mode Key with a flex film assembly tool.

#### INSTALLATION

Align a new Mode Key with the two guiding bolts.

Place the Mode Key in place.



## Replacement

### 4.33 Navi Key

*Follow the 3.1 – 3.9 Disassembly instructions!*

Carry out the replacement as described below.

*Follow the 5.2 – 5.10 Reassembly instructions!*

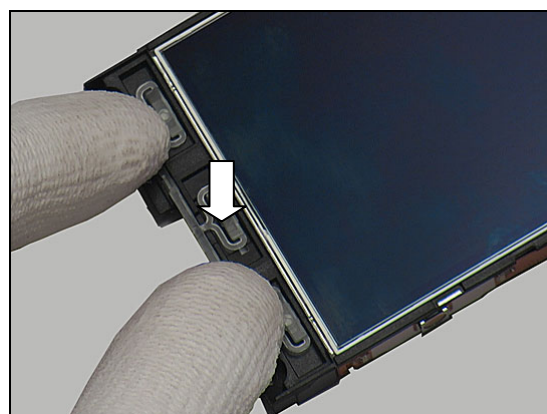
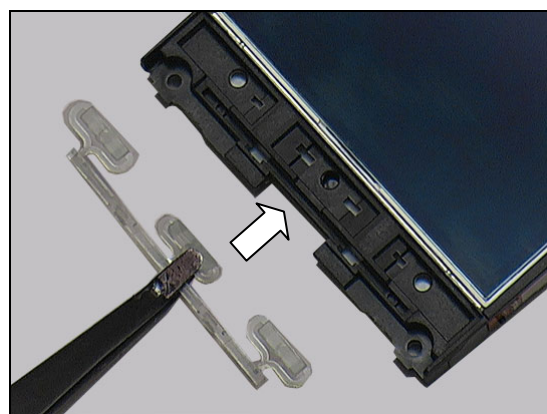
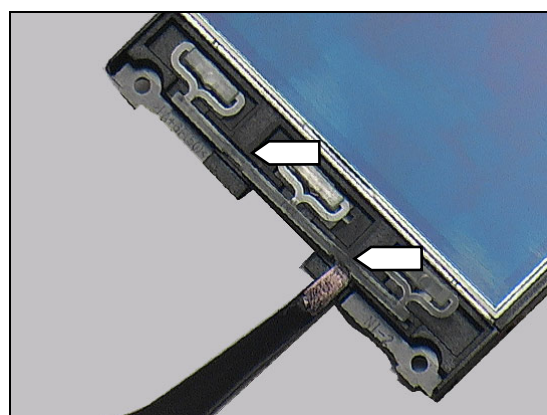
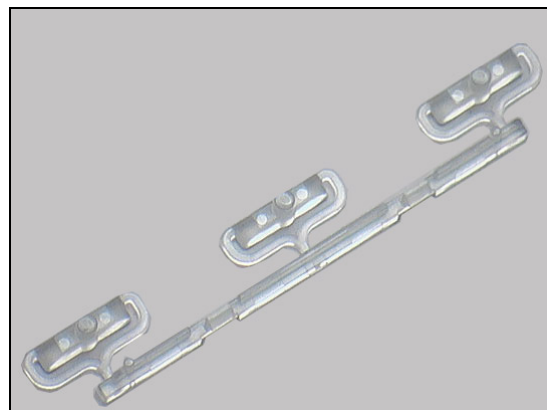
#### REMOVAL

Unsnap the two hooks and release the Navi Key with a flex film assembly tool.

#### INSTALLATION

Place a new Navi Key in place.

Press to snap the hooks.





## Replacement

### 4.34 On/Off Key

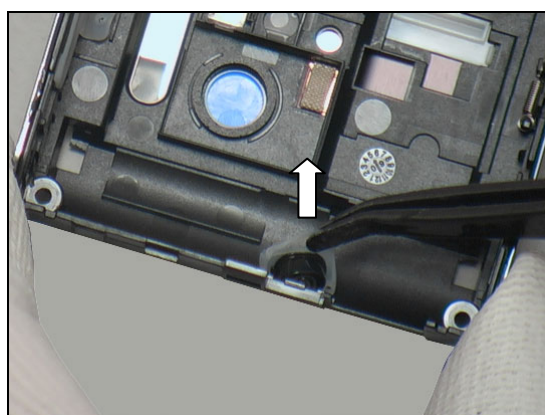
*Follow the 3.1 – 3.6 Disassembly instructions!*

Carry out the replacement as described below.

*Follow the 5.5 – 5.10 Reassembly instructions!*

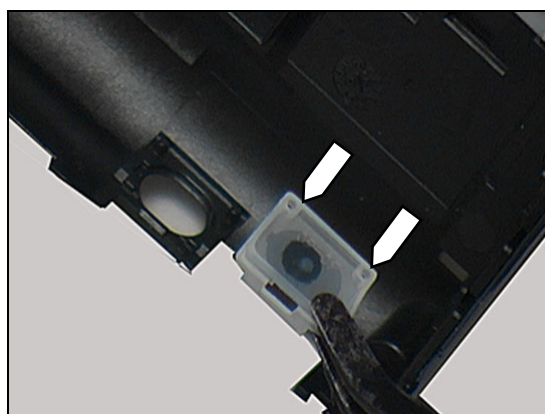
#### REMOVAL

Remove the On/Off Key with a flex film assembly tool.

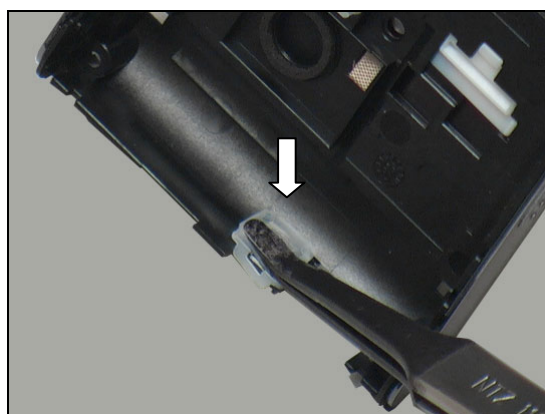


#### INSTALLATION

Align a new On/Off Key with the two guiding holes.



Press the rubber part to fasten the On/Off Key by the guiding poles.



## Replacement

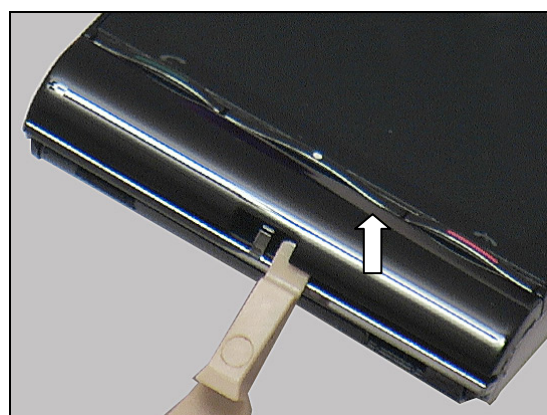
### 4.35 Panel Cover

Carry out the replacement as described below.

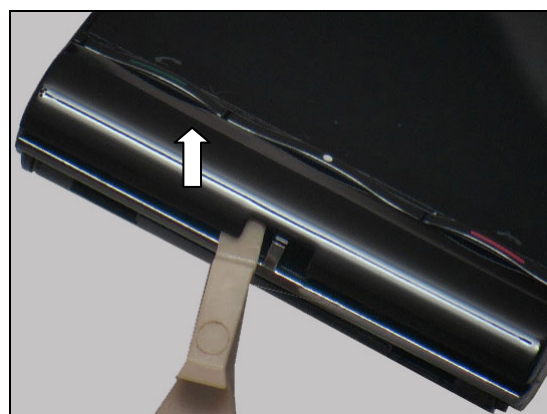
**For other variants of the Panel Cover Co-branding, follow the same operation procedure.**

#### REMOVAL

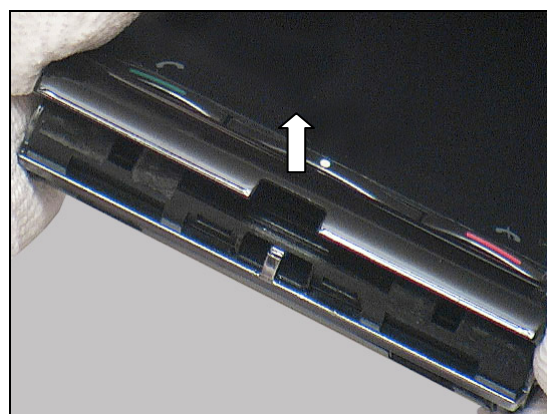
Unsnap the right hook with a front opening tool.



Unsnap the left hook.



Detach and remove the Panel Cover.

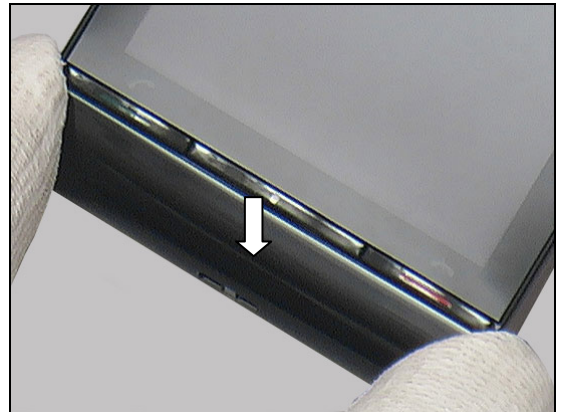
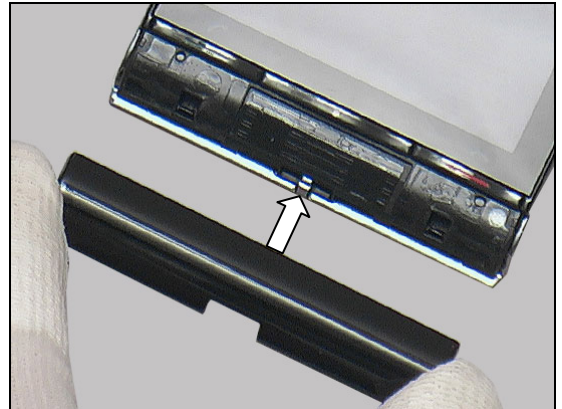


## Replacement: Panel Cover

### INSTALLATION

Install a new Panel Cover in place.

Press to make sure it is attached.





## Replacement

### 4.36 End Key

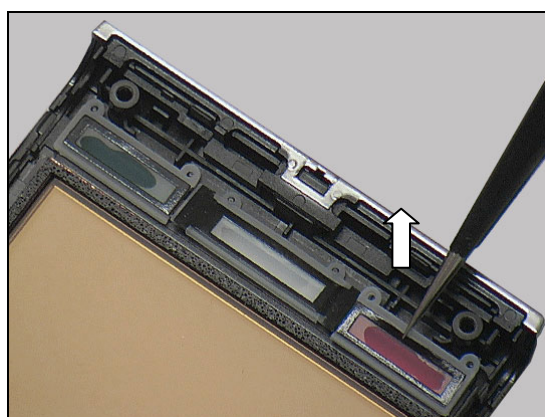
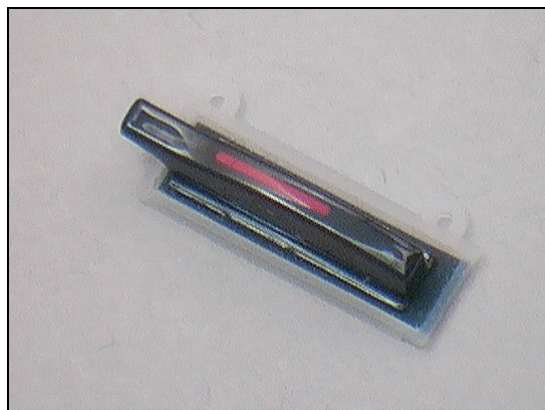
*Follow the 3.1 – 3.5 Disassembly instructions!*

Carry out the replacement as described below.

*Follow the 5.6 – 5.10 Reassembly instructions!*

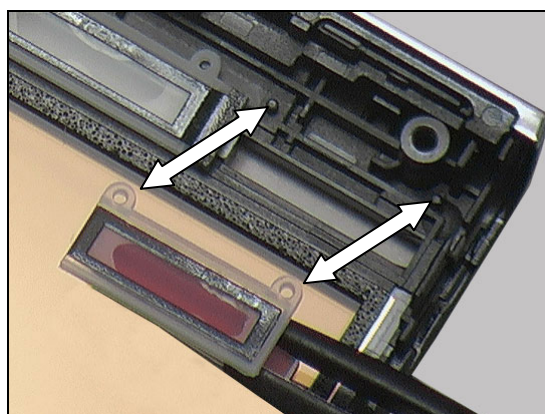
#### REMOVAL

Remove the End Key from the slot with a pair of tweezers.

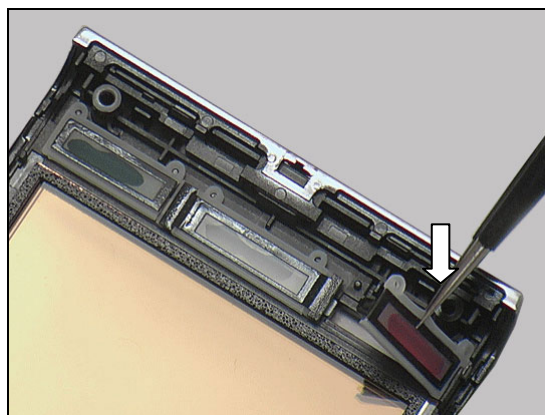


#### INSTALLATION

Align a new End Key with the two guiding poles.



Position it in the slot.



## Replacement

### 4.37 Shield Can Lid A

*Follow the 3.1 – 3.9 Disassembly instructions!*

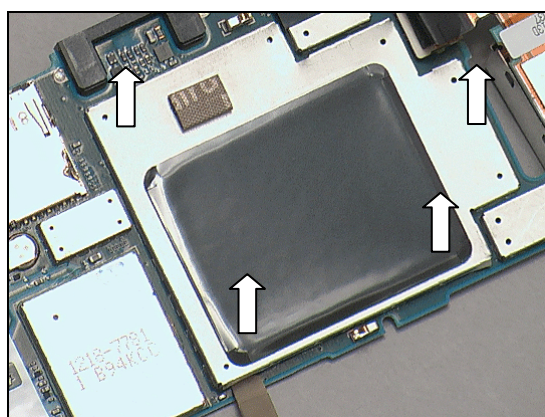
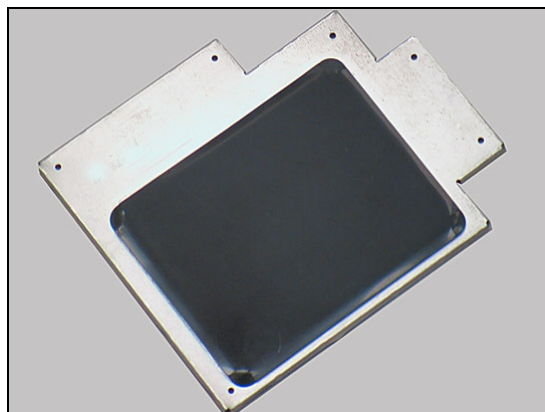
Carry out the replacement as described below.

*Follow the 5.2 – 5.10 Reassembly instructions!*

#### REMOVAL

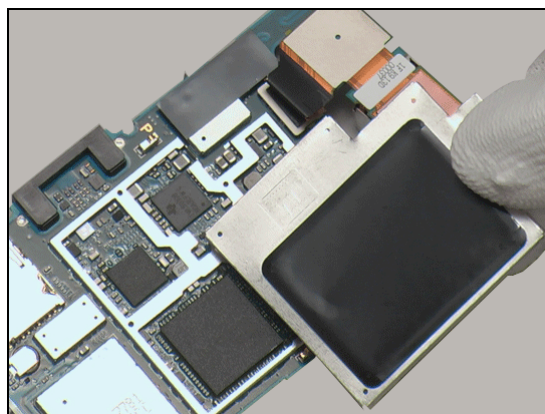
Unsnap the corners of the Lid with a front opening tool and remove it.

**Scrap! Not to be reused!**

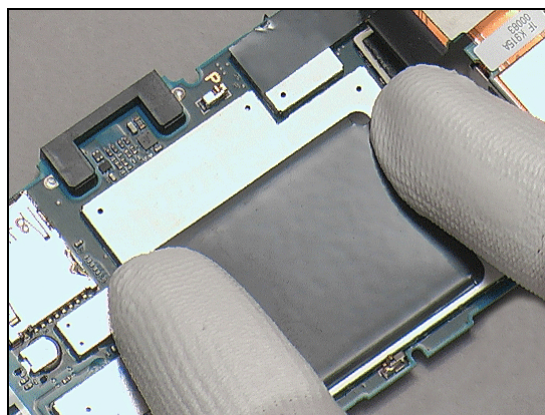


#### INSTALLATION

Place a new Shield Can Lid in place.



Press to secure it is attached.



## Replacement

### 4.38 Shield Can Lid B

*Follow the 3.1 – 3.9 Disassembly instructions!*

Carry out the replacement as described below.

*Follow the 5.2 – 5.10 Reassembly instructions!*

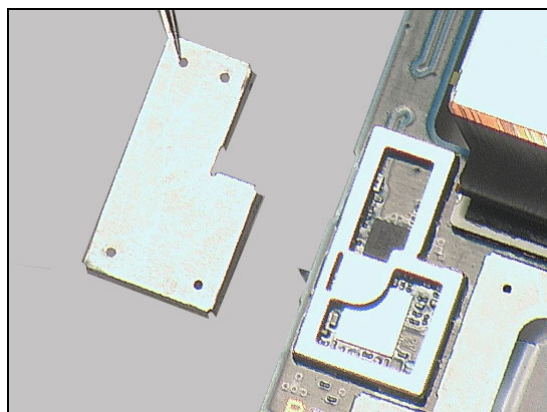
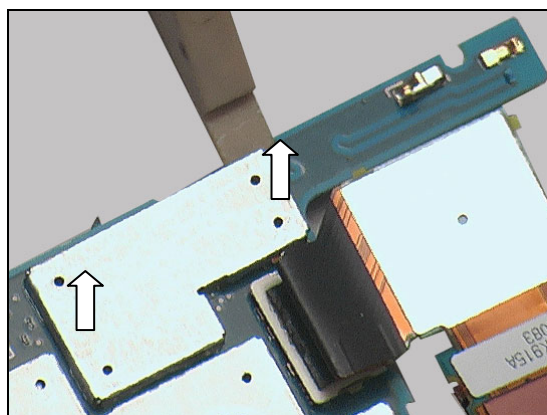
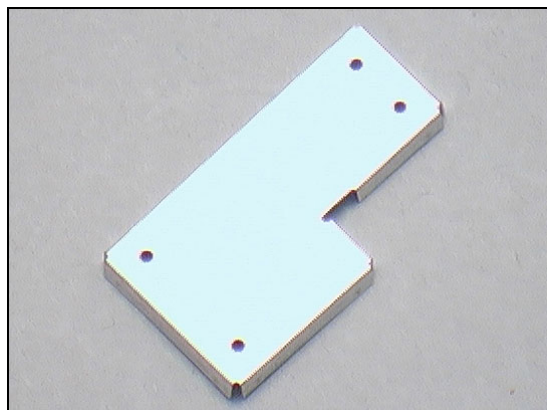
#### REMOVAL

Unsnap the corners of the Lid with a front opening tool and remove it.

**Scrap! Not to be reused!**

#### INSTALLATION

Place a new Shield Can Lid in place with a pair of tweezers and press gently until it is securely attached with fingers.





## Replacement

### 4.39 Shield Can Lid C

Follow the 3.1 – 3.9 Disassembly instructions!  
 Carry out the replacement as described below.  
 Follow the 5.2 – 5.10 Reassembly instructions!

#### REMOVAL

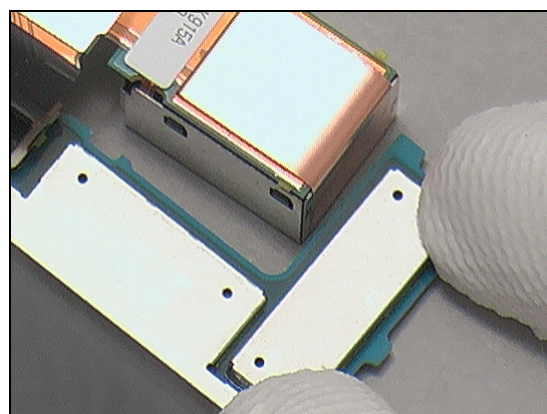
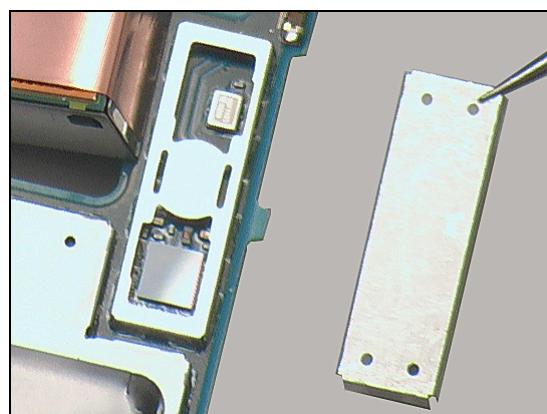
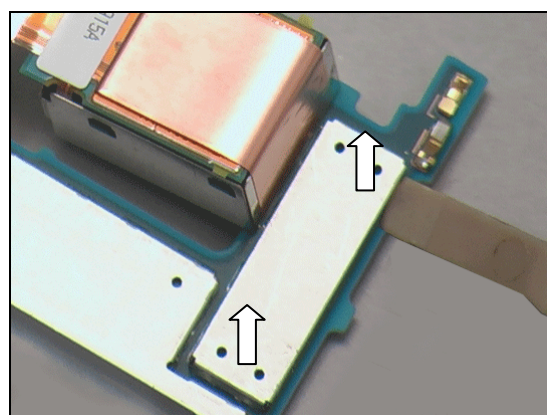
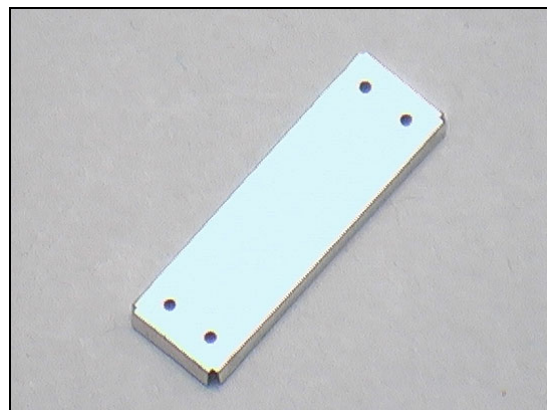
Unsnap the corners of the Lid with a front opening tool and remove it.

**Scrap! Not to be reused!**

#### INSTALLATION

Place a new Shield Can Lid C in place with a pair of tweezers.

Press with fingers to secure it is attached.





## Replacement

### 4.40 Window Main Display

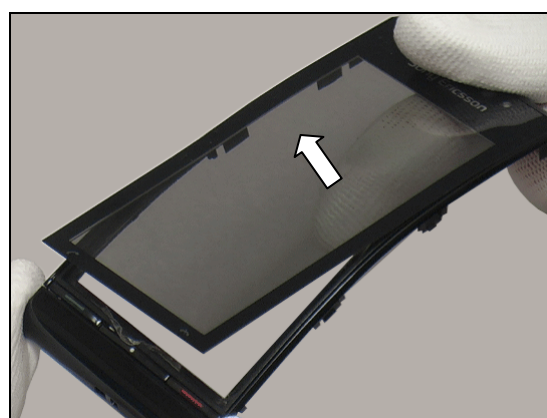
*Follow the 3.1 – 3.5 Disassembly instructions!*

Carry out the replacement as described below.

*Follow the 5.6 – 5.10 Reassembly instructions!*

#### REMOVAL

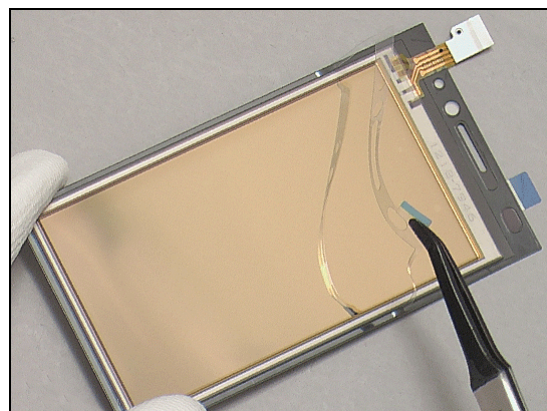
Push the Window Main Display from behind with fingers to detach it from the Front Cover Sub Assy.



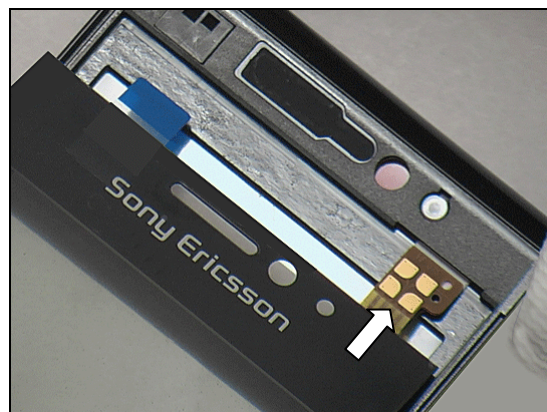
#### INSTALLATION

Remove the protection foil from a new Window Main Display and a Front Cover Sub Assy.

**Use a new Front Cover Sub Assy.**

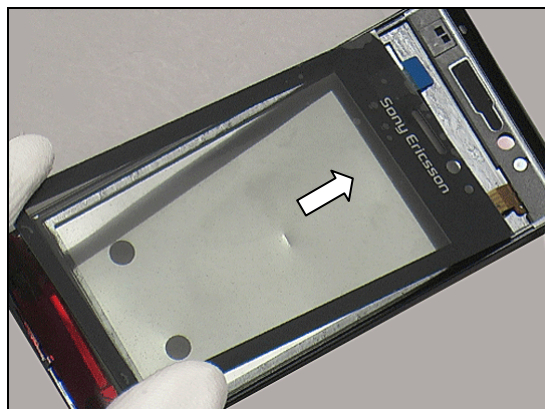


Insert the FPC of the Window Main Display into the slot.

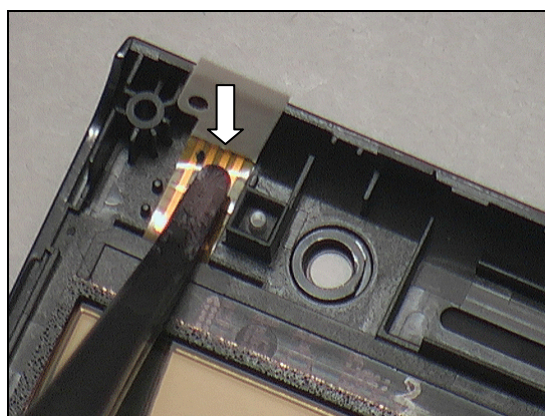


## Replacement: Window Main Display

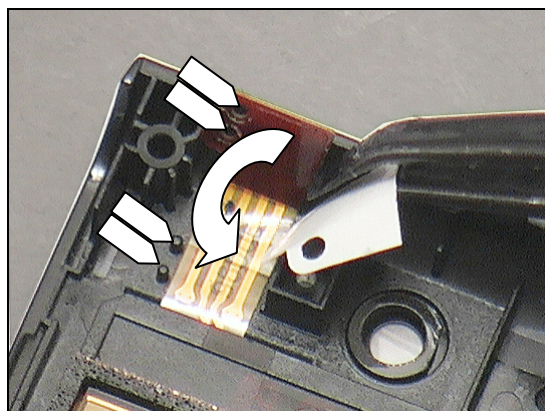
Attach the new Window Main Display in place.



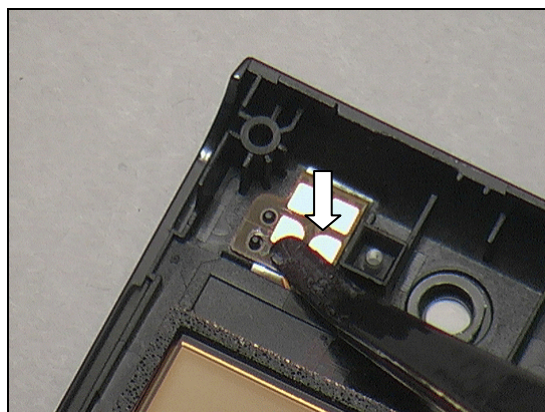
Turn the Front Cover Sub Assy over and press the FPC.



Remove the protection foil.  
Fold the FPC over aligning the guiding holes.



Press to make sure the attachment.

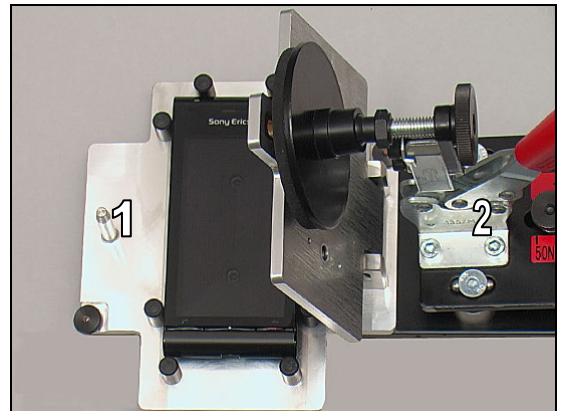


## Replacement: Window Main Display

Fasten the Window Pressure Tool Insert (1) to the Pressure tool (2).

Put the Window Main Display and the Front Cover Sub Assembly in the Window Pressure Tool Insert as shown in the picture.

Press it with a preset pressure value of  $50 \pm 5\text{N}$  for five to six seconds.





## Replacement

### 4.41 Volume Key

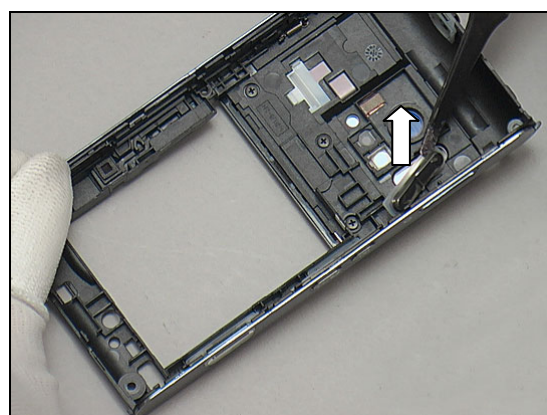
*Follow the 3.1 – 3.6 Disassembly instructions!*

Carry out the replacement as described below.

*Follow the 5.5 – 5.10 Reassembly instructions!*

#### REMOVAL

Remove the Volume Key with a flex film assembly tool.

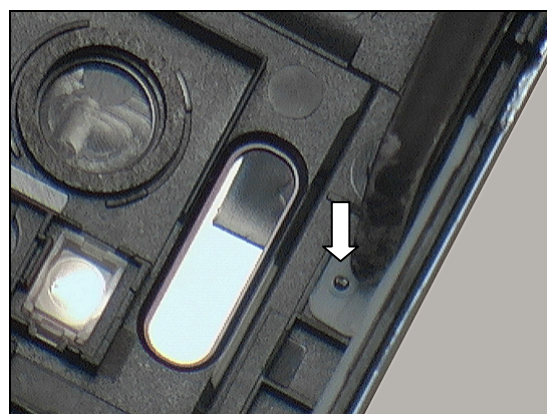


#### INSTALLATION

Place a new Volume Key in place.



Press the rubber part of the Volume Key to fasten it by the guiding pole.

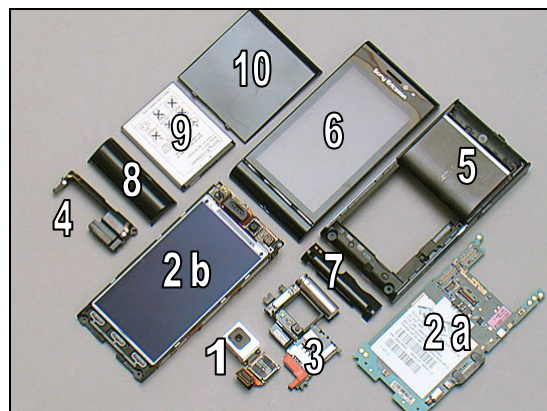




## 5 Reassembly

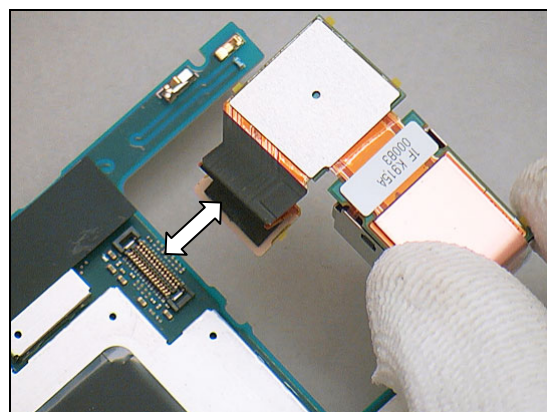
The reassembly is done in the following order:

1. Camera 12.1M MPixel
2. PCB (a) & Frame PWB Sub Assembly with Display (b)
3. Xenon Flash Module
4. Antenna (Wlan/GPS/Bluetooth)
5. Rear Cover Sub Assembly
6. Front Cover Sub Assembly
7. Main Antenna
8. Rear Panel Sub Assy
9. Battery
10. Battery Cover

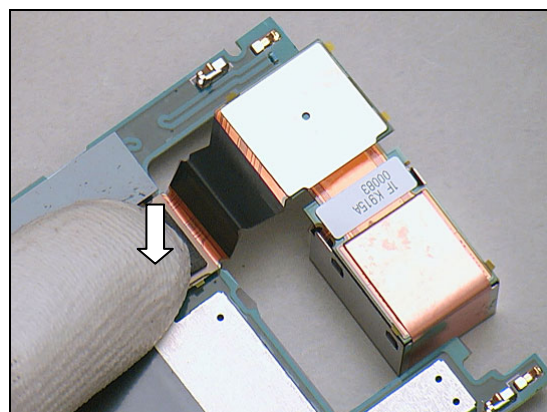


### 5.1 Camera 12.1M MPixel

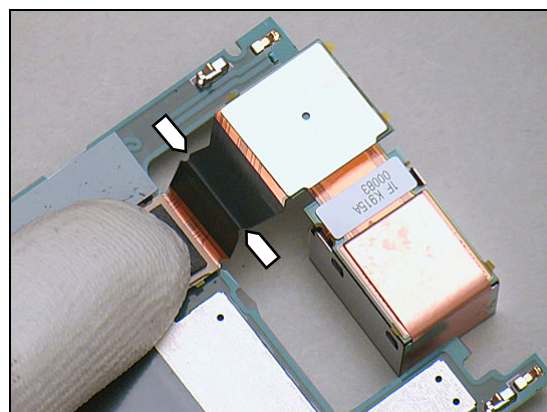
Connect the Camera to the PCB.



Press to connect the Camera connector with finger.

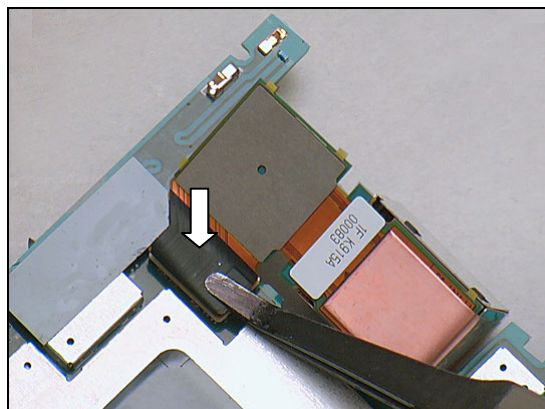


Fold the flex of the Camera along the guiding lines as indicated.



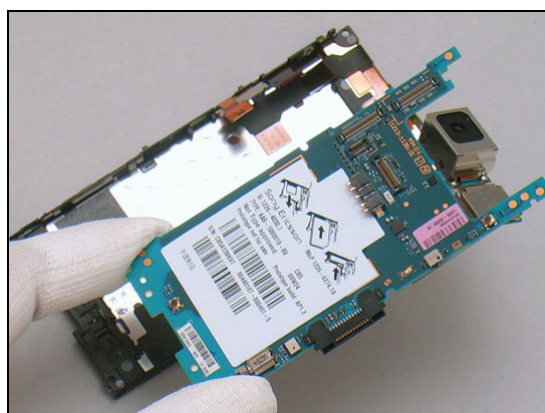
## Reassembly

Press to fold the flex of the Camera with a flex film assembly tool.

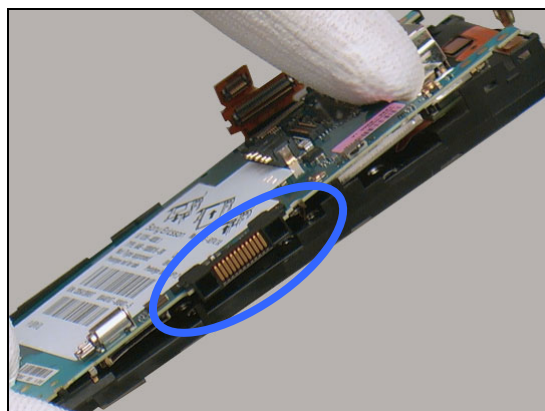


### 5.2 PCB & Frame PWB Sub Assy with Display

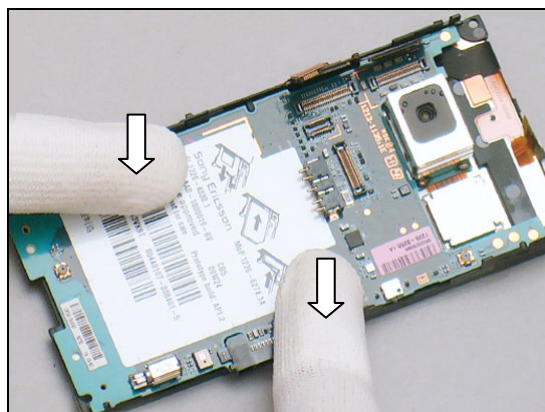
Put the PCB on the Frame PWB Sub Assy.



Make sure the system connector properly fits in its place.



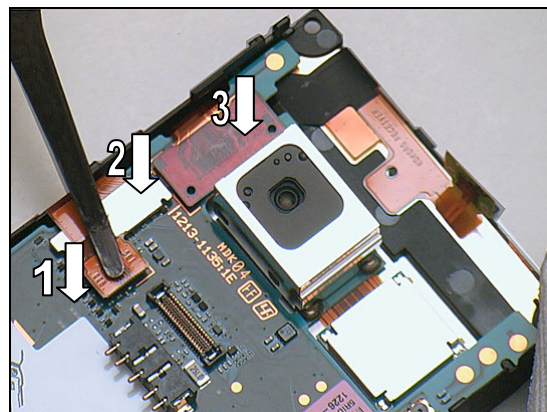
Press to snap the PCB to the Frame PWB Sub Assembly.





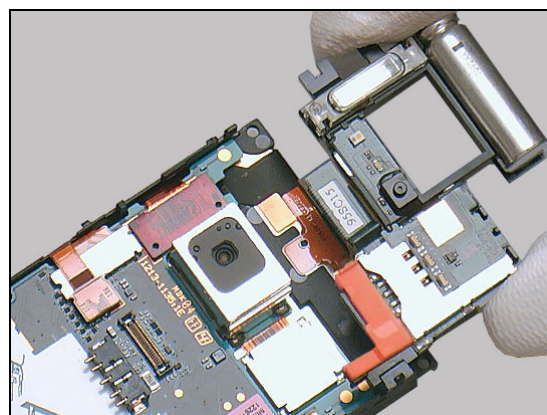
## Reassembly

Connect the FPC Side Key connector (1), FPC Receiver connector (2) and Display connector (3) with a flex film assembly tool.

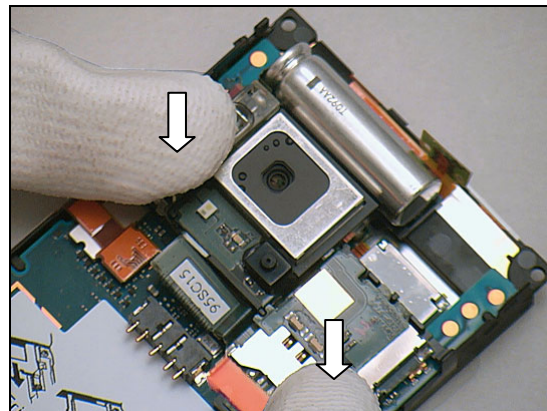


### 5.3 Xenon Flash Module

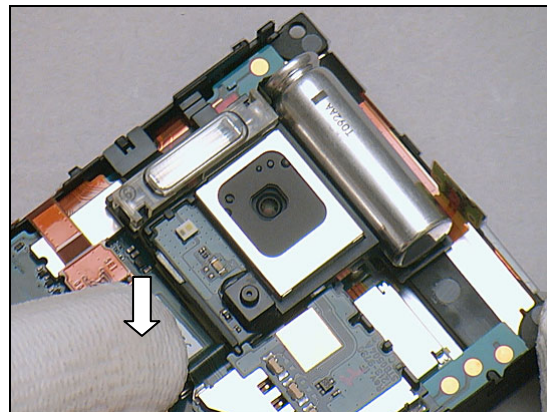
Put the Xenon Flash Module in place.



Press to snap the three hooks of the Xenon Flash Module.



Connect the Xenon Flash Module connector to the PCB.

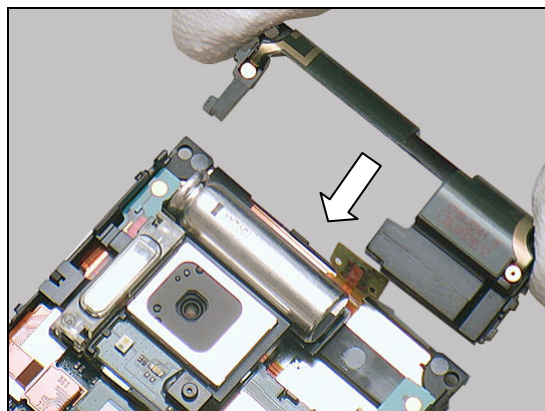




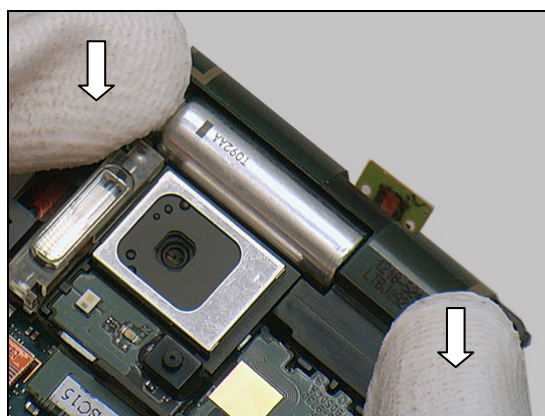
## Reassembly

### 5.4 Antenna(Wlan/GPS/Bluetooth)

Place the Antenna in place.



Press to snap the two hooks of the Antenna.



Press to attach the FPC Receiver to the Antenna aligning the two guiding bolts.



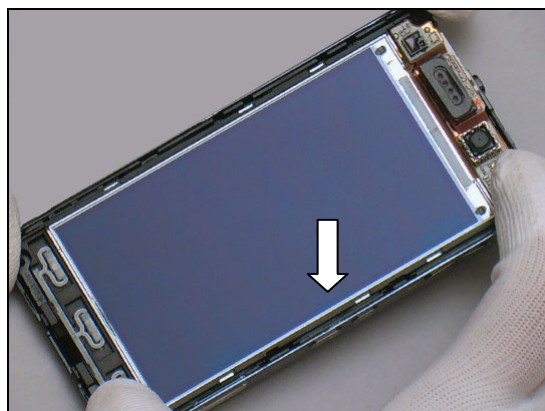
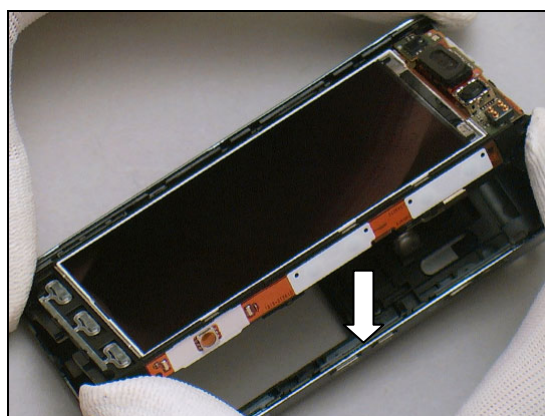
## Reassembly

### 5.5 Rear Cover Sub Assy

Align the system connector of the unit with the system connector opening.

Put the unit in the Rear Cover Sub Assy.

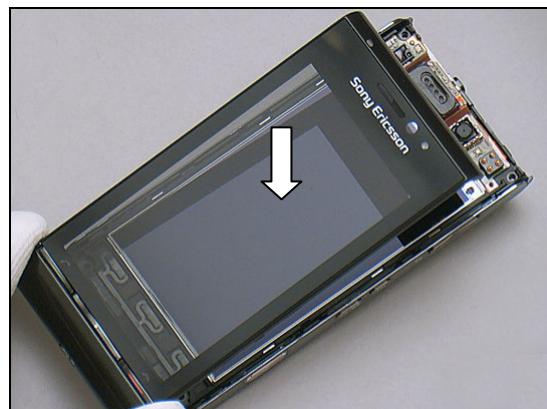
Make sure the placement is correct.



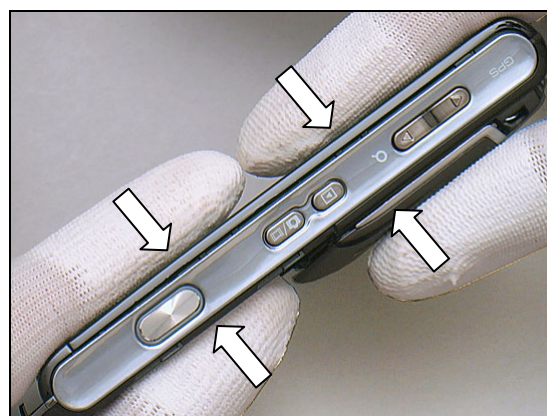
## Reassembly

### 5.6 Front Cover Sub Assy

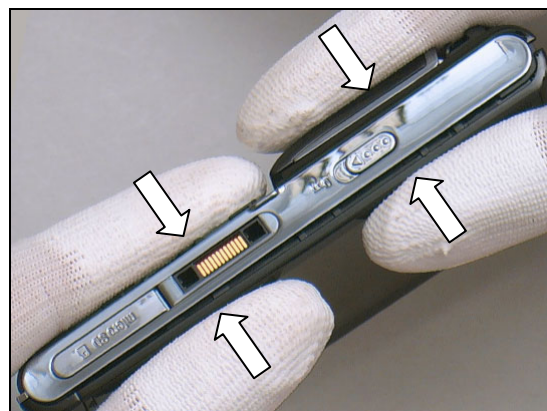
Put the Front Cover Sub Assy above.



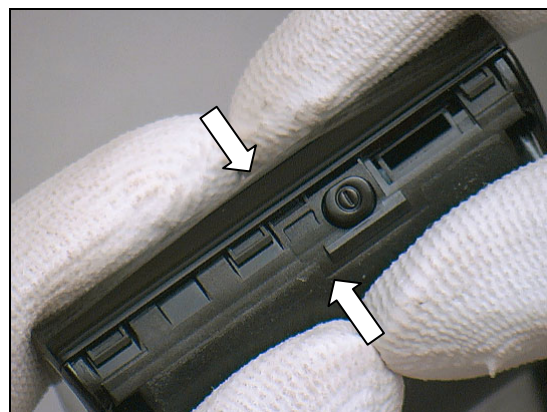
Press to snap one side with fingers.



Press to snap the other side with fingers.



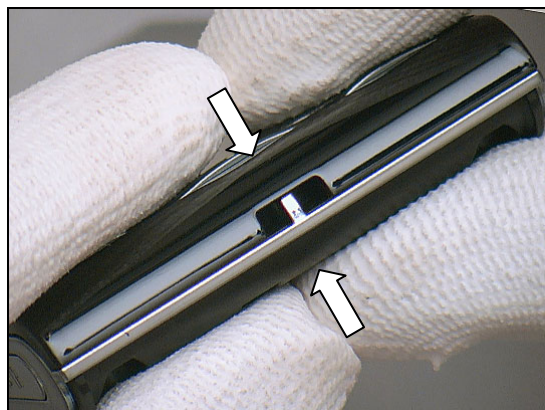
Press to snap the three hooks on the top with fingers.





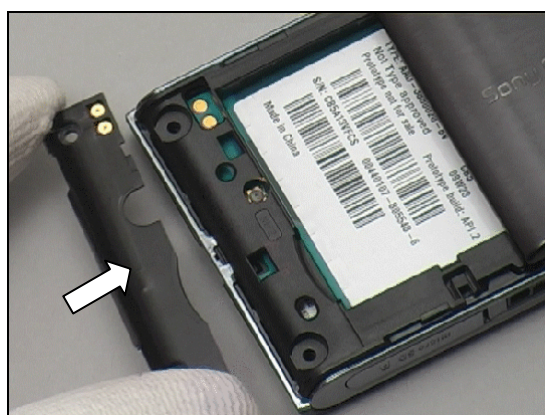
## Reassembly

Press to snap the two hooks of the bottom with fingers.



### 5.7 Main Antenna

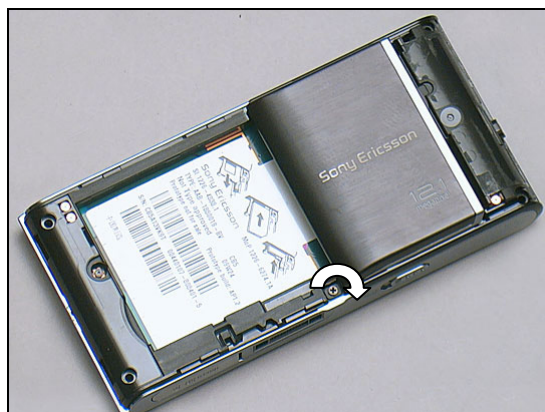
Put the Main Antenna in place.



Press to snap the two hooks of the Main Antenna with fingers.

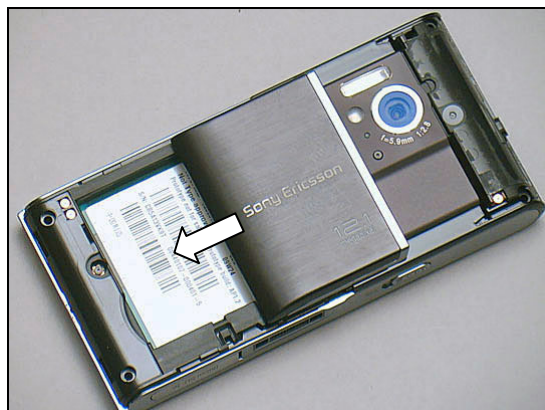


Tighten the Screw with a screwdriver with JCIS No0 to a torque of 12 Ncm.

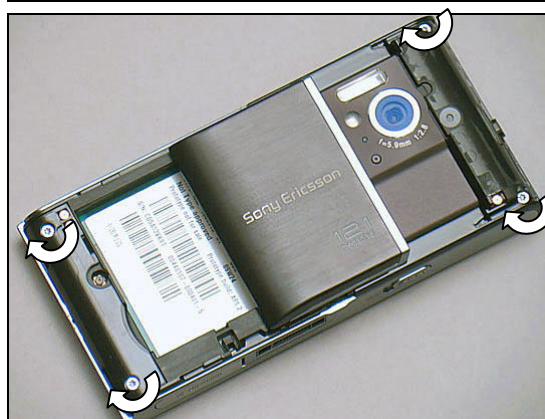


## Reassembly

Slide the Camera cover open.

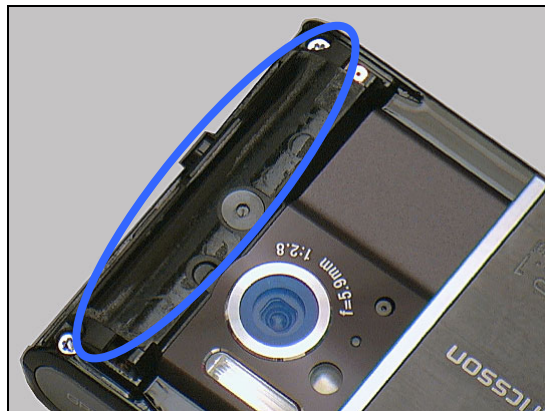


Tighten the four Screws with a screwdriver with T6 to a torque of 18 Ncm.

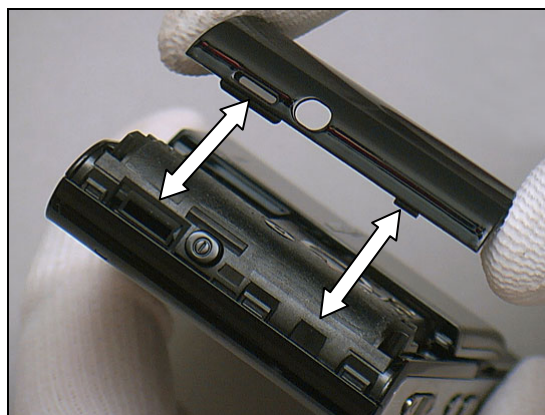


### 5.8 Rear Panel Sub Assy

Install a new Foil Adhesive Panel Rear.



Put the Rear Panel Sub Assy in place.



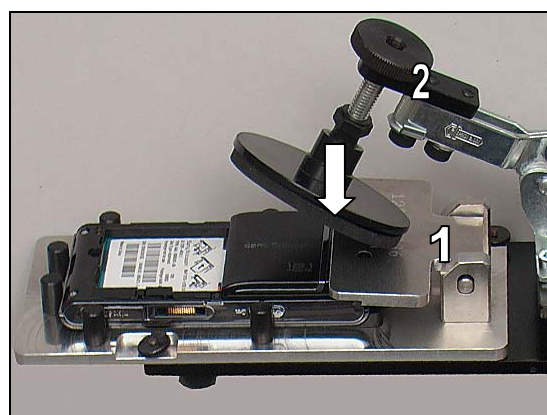


## Reassembly

Press to snap the two hooks of the Rear Panel Sub Assy with fingers.

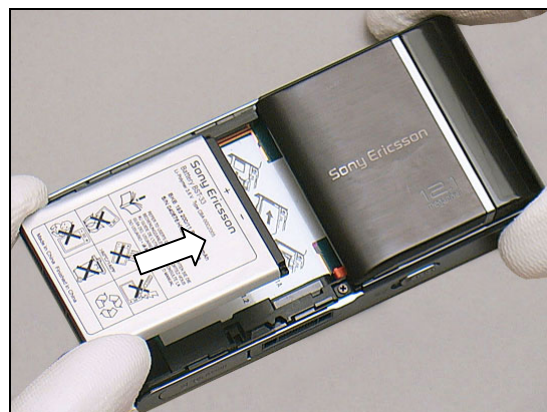


Fasten the Rear Panel Pressure Tool Insert (1) to the Pressure tool (2).  
Put the phone in the Rear Panel Pressure Tool Insert as shown in the picture.  
Press it with a preset pressure value of  $150 \pm 5\text{N}$  for five to six seconds.

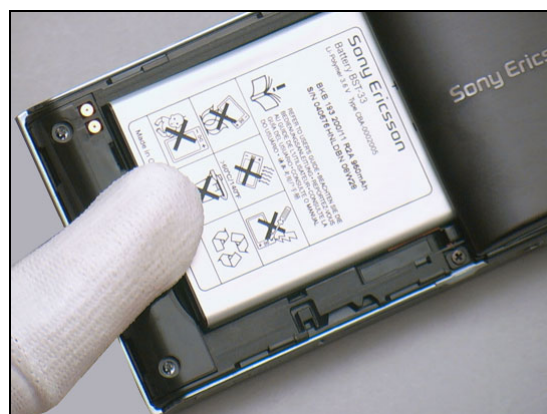


## 5.9 Battery

Put the Battery in place.



Press the Battery into its cavity.

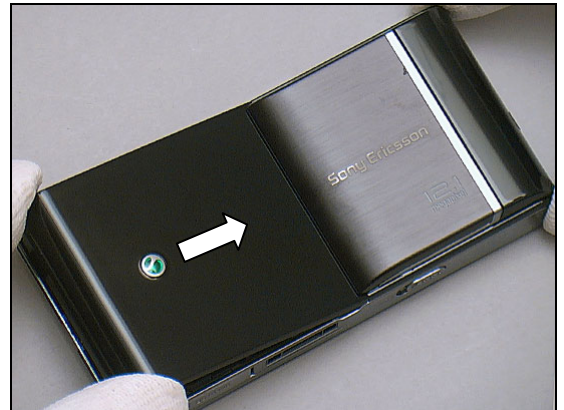




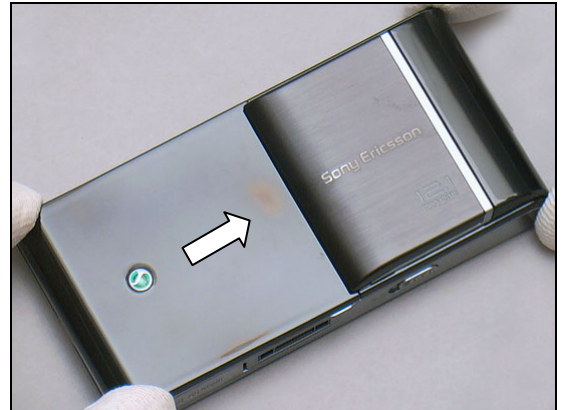
## Reassembly

### 5.10 Battery Cover

Put the Battery Cover in place.



Slide to snap the Battery Cover.





## 6 Revision History

| Rev. | Date        | Changes / Comments   |
|------|-------------|--|
| 1    | 2009-Oct-14 | Initial release  |
| 2    | 2009-Nov-05 | 2 <sup>nd</sup> release tools name has been updated.                   |
| 3    | 2009-Nov-30 | Added information about discharge the Flash in the Disassembly section |